

Population and Demographic Trends

League of Women Voters

2019

Elizabeth Garner

State Demography Office

Colorado Department of Local Affairs

Demography.dola.colorado.gov



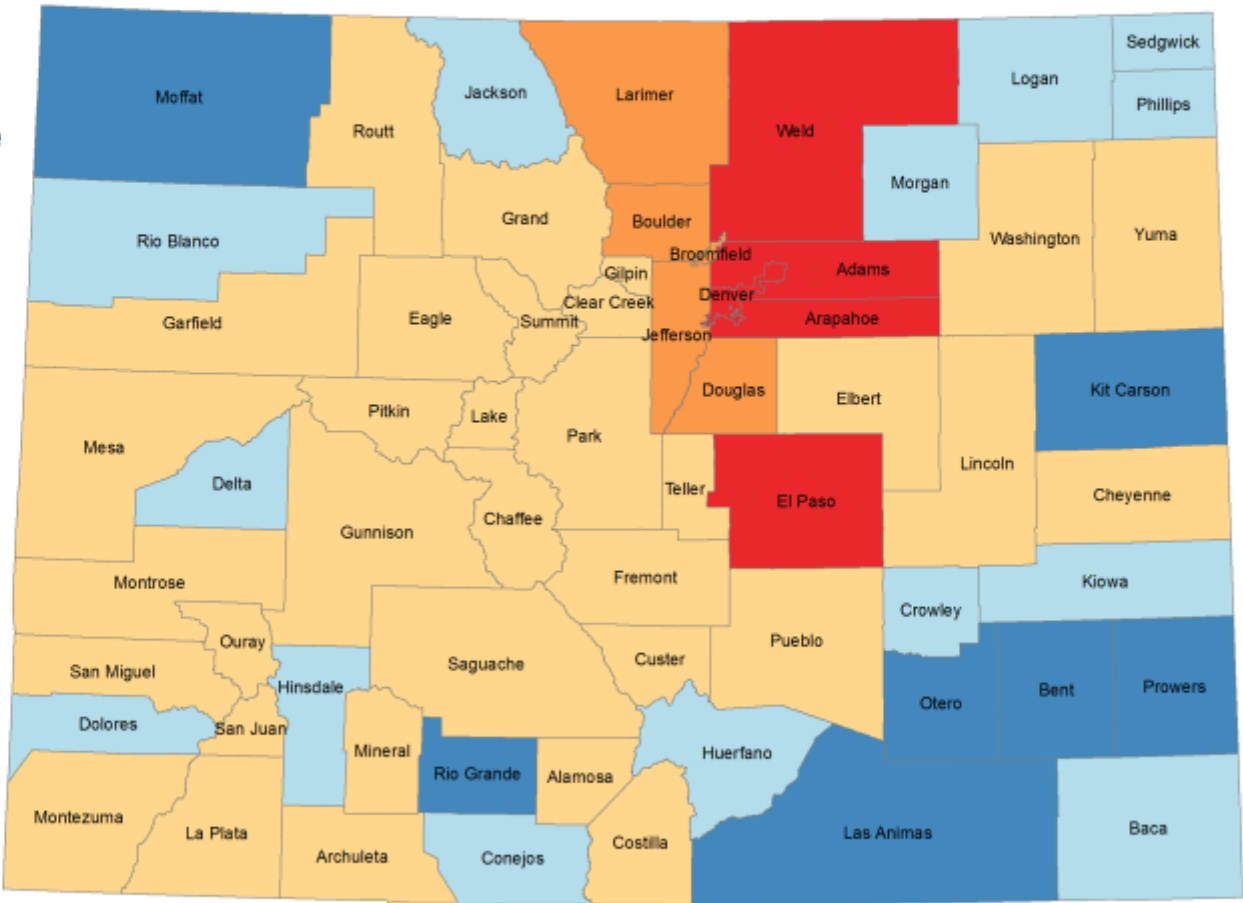
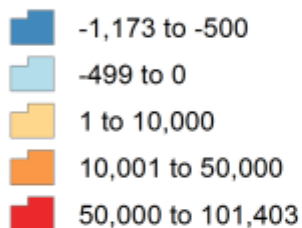
COLORADO
Department of Local Affairs

Big Picture - 2017-2018 Pop Change

- US - 327.2 million, + 2.02 million or .6%
- Colorado - 5,695,564
- Ranked 7th fastest 1.4% - NV, ID, UT, AZ, FL, WA
- 8th in total growth 79,662 - TX, FL, CA, AZ, NC, WA, GA
- Range in Colorado by county (2016-17)
 - +12,000 to -470
- Since 2010 - CO +666,200 or 83K/yr (1.6%)
Denver +101,403 or 14,400/yr (2.2%)



Colorado: Total Population Change 2010 - 2017



Colorado State Demography Office, 03/22/2018



COLORADO
Department of Local Affairs

County Population Rankings, 2017

Population Growth

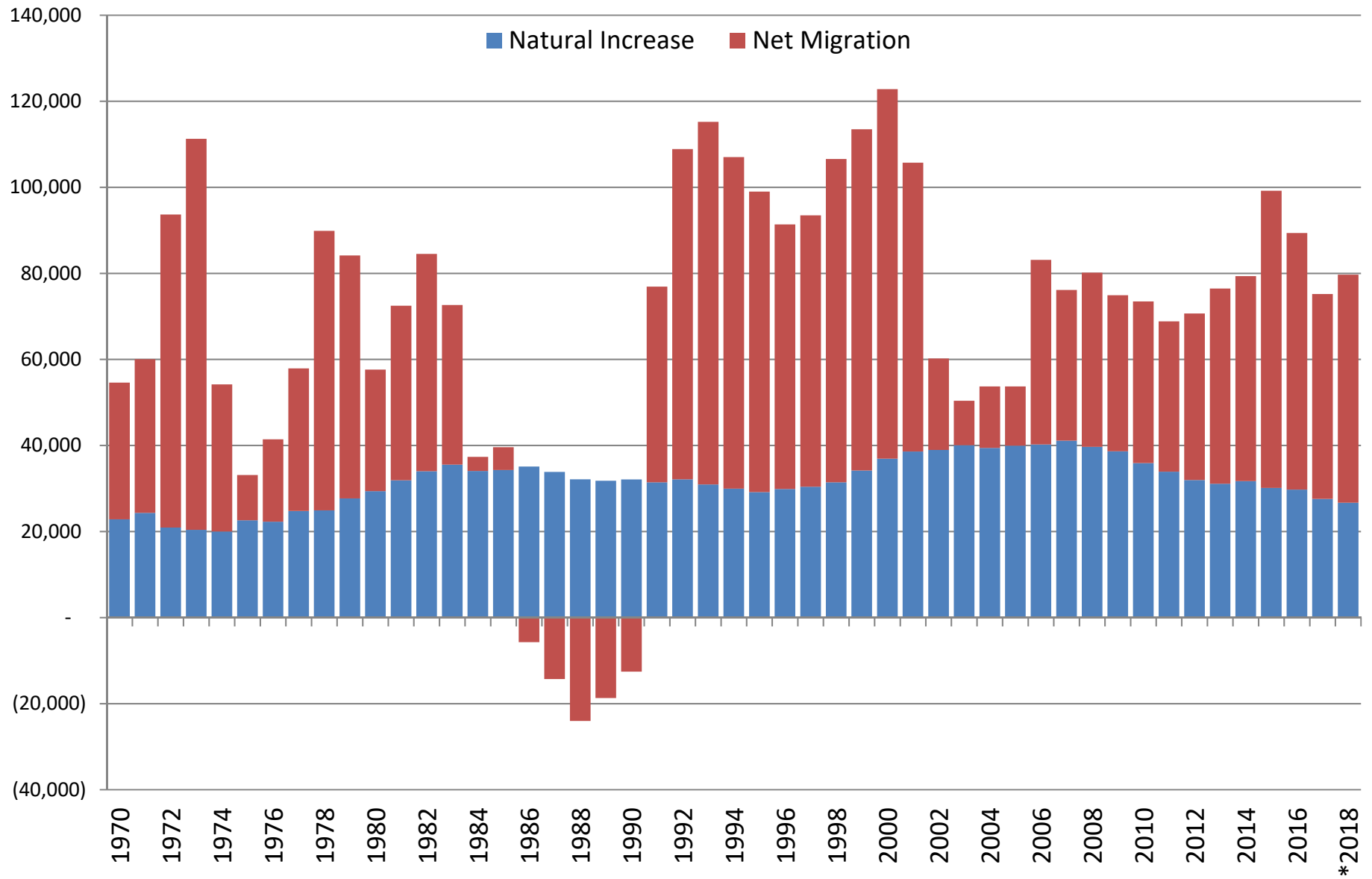
1 El Paso County	12,201
2 Weld County	10,141
3 Denver County	9,304
4 Douglas County	7,665
5 Arapahoe County	5,991

Largest by Population

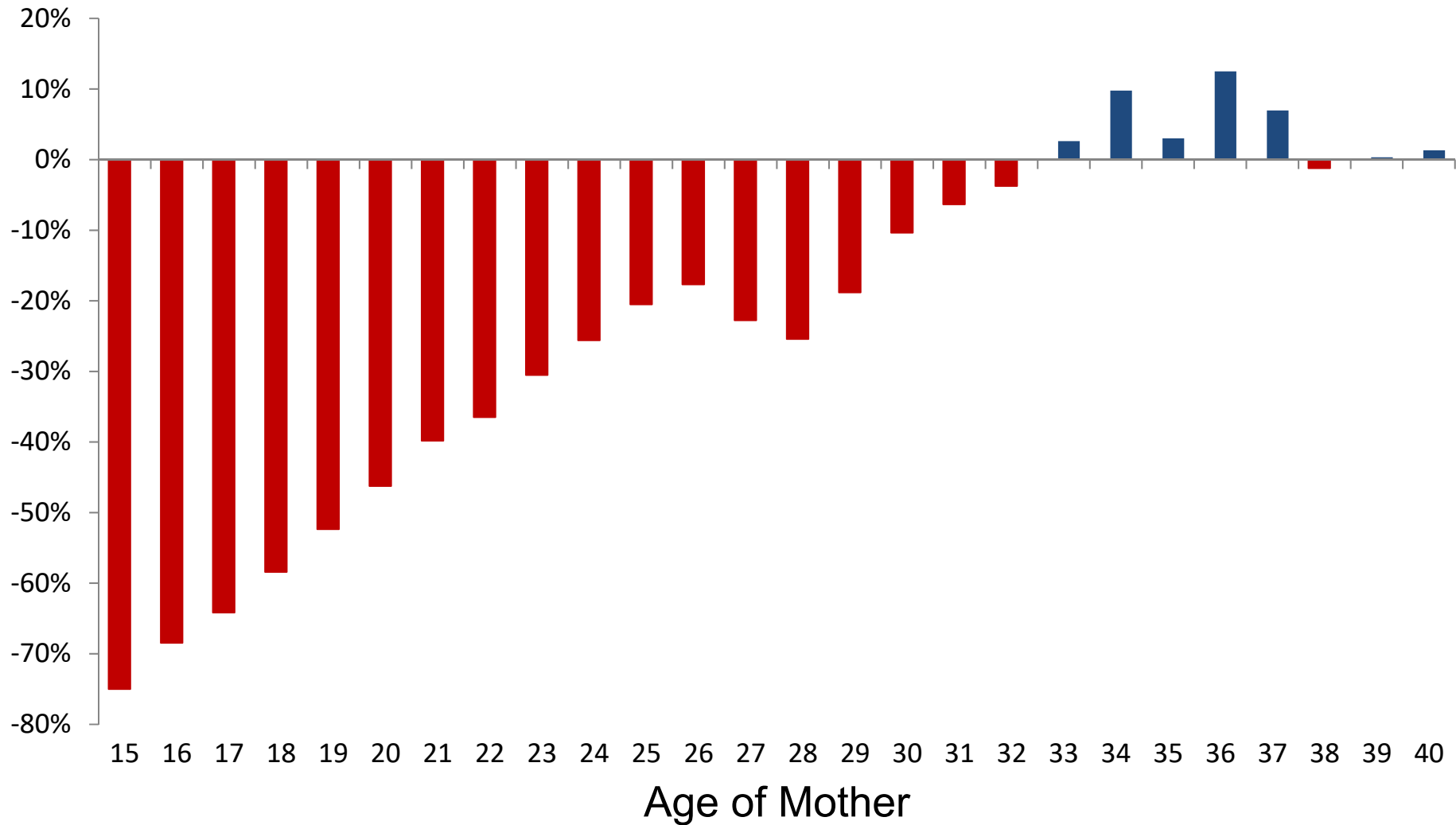
1 Denver County	705,651
2 El Paso County	701,283
3 Arapahoe County	643,257
4 Jefferson County	575,193
5 Adams County	503,375



Components of Population Change 1970-2018



PERCENT CHANGE IN BIRTH RATE BY AGE 2009-17



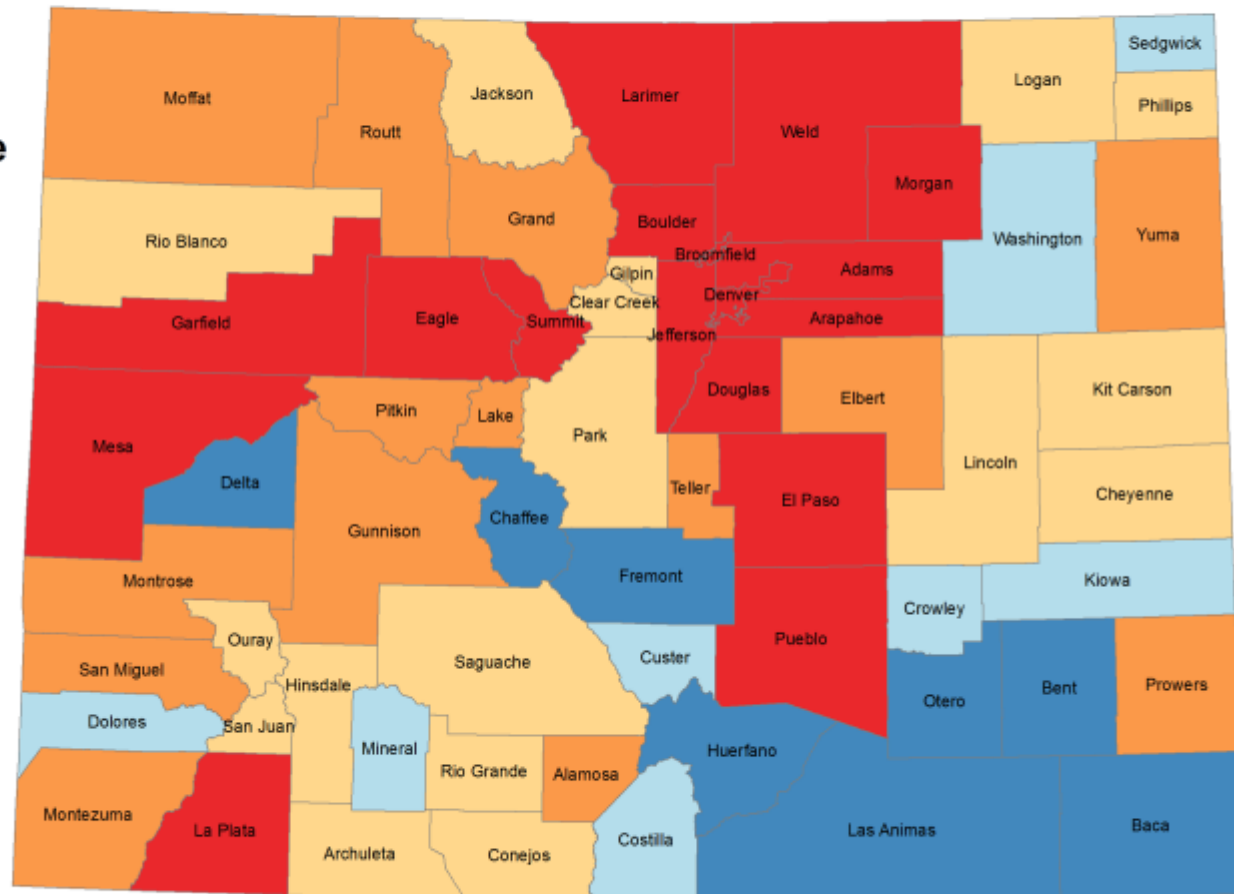
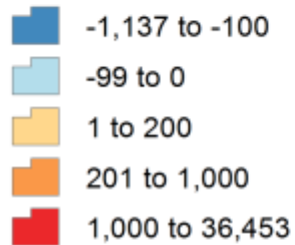
COLORADO
Department of Local Affairs

Birth Rates from Colorado Department of Public Health and Environment, 2018

Colorado: Natural Increase

2010 - 2017

Natural Increase



Colorado State Demography Office, 06/04/2018

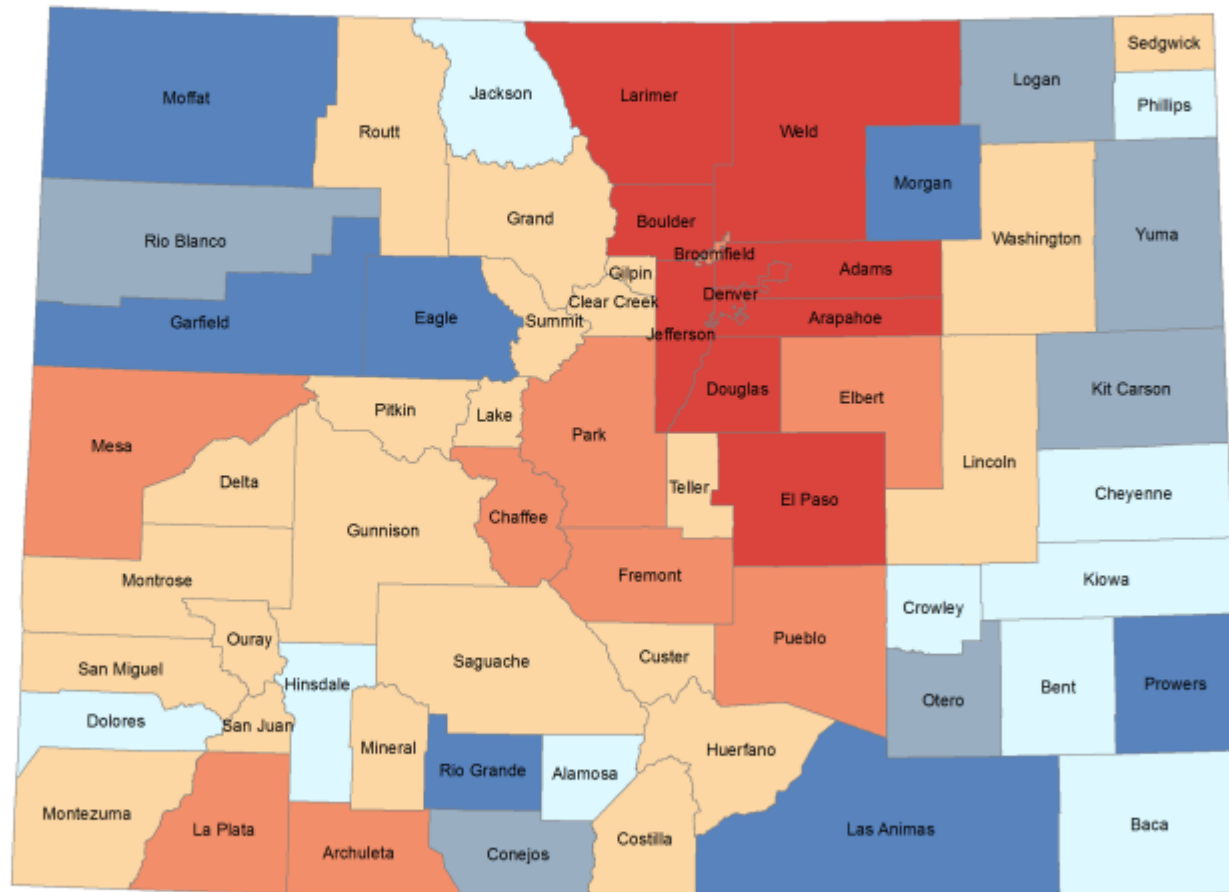
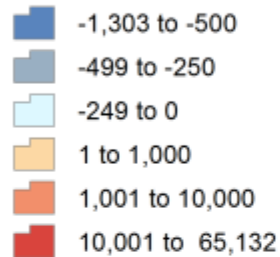


COLORADO
Department of Local Affairs

Colorado: Net Migration

2010 - 2017

Net Migration

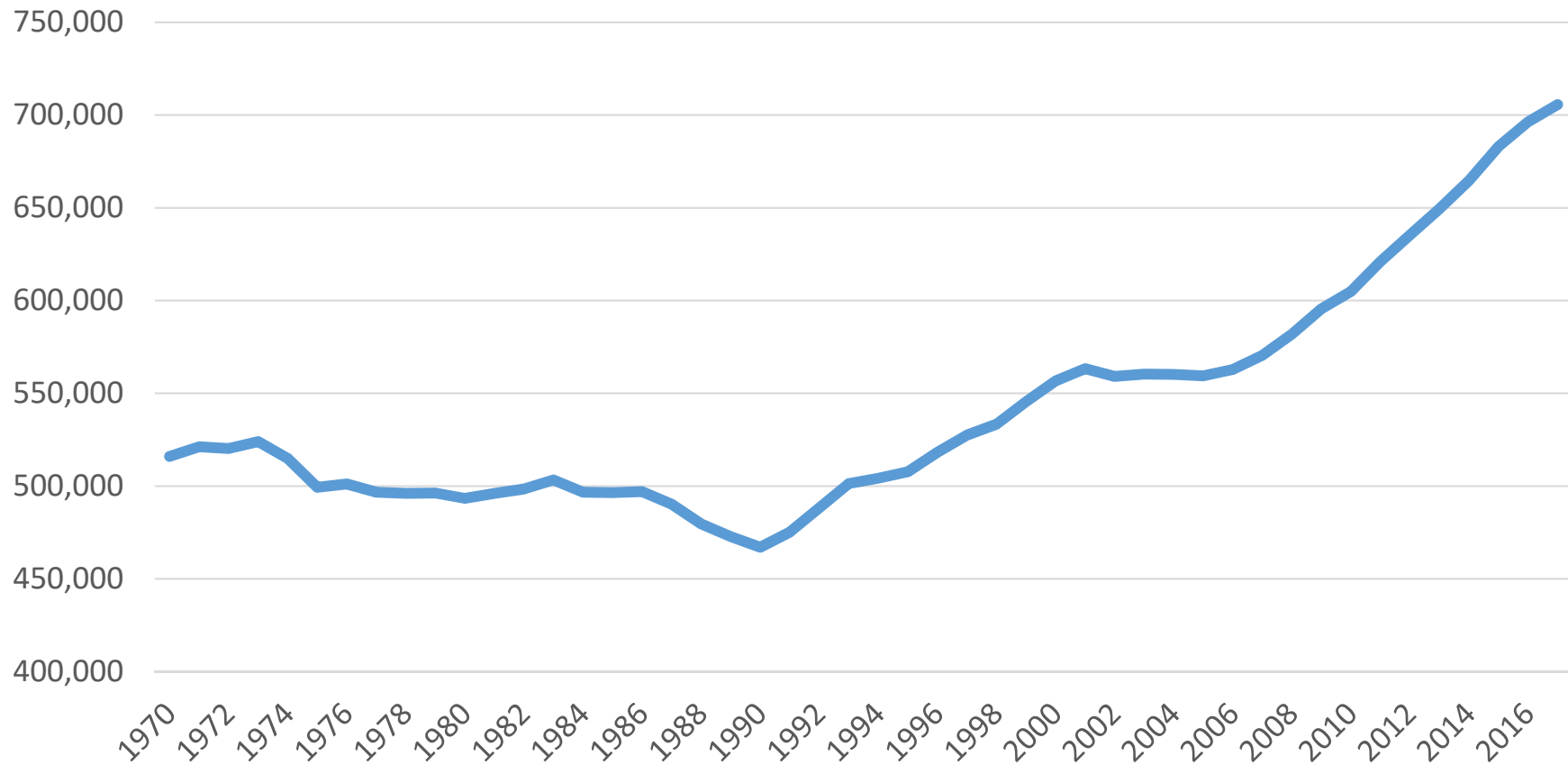


Colorado State Demography Office, 06/04/2018



COLORADO
Department of Local Affairs

Denver Historic Population Trends (1970-2017)

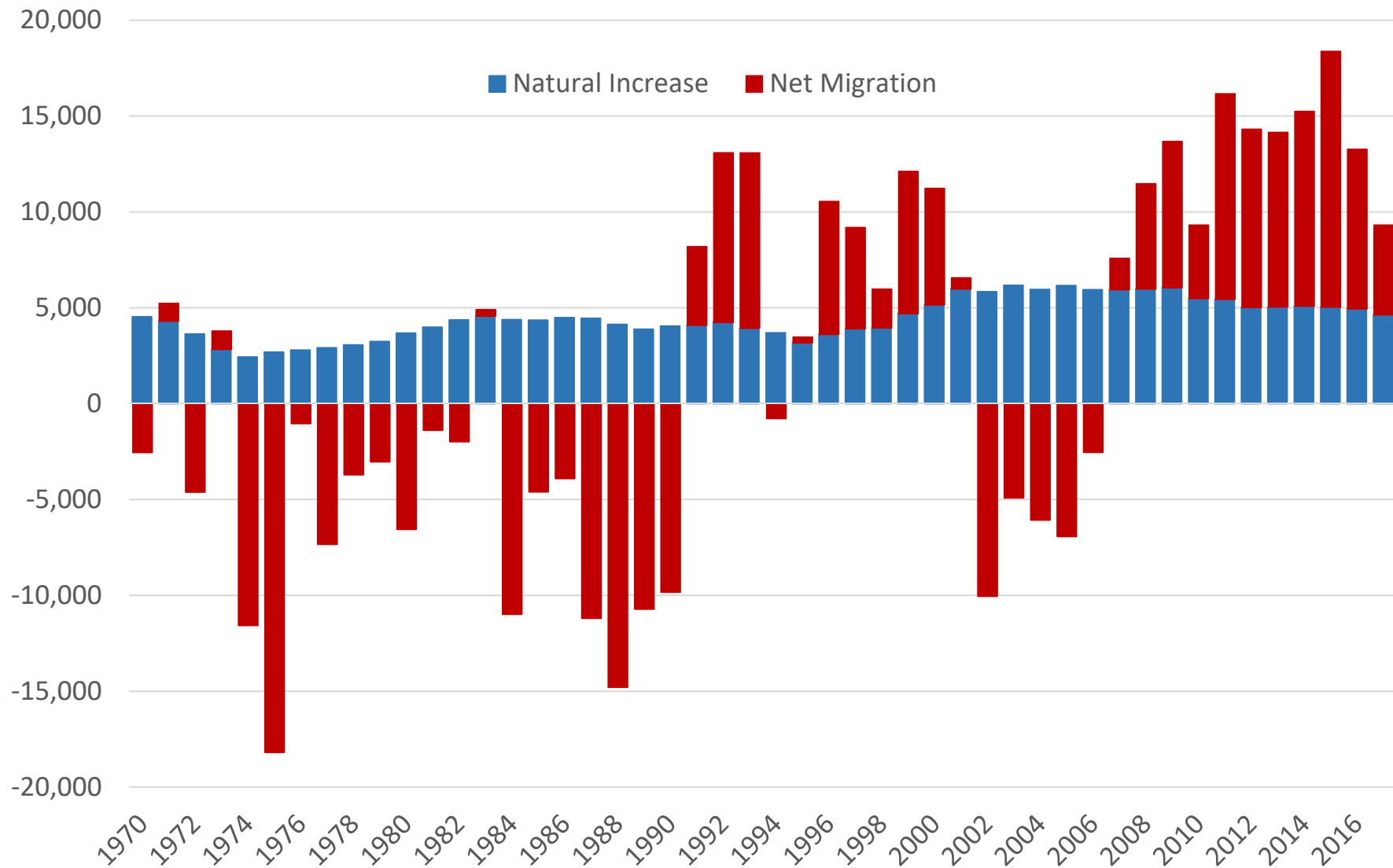


Area	1970 Pop	1980 Pop	1990 Pop	2000 Pop	2010 Pop	2017 Pop	2030 Pop Forecast	2040 Pop Forecast	2050 Pop Forecast
Denver	515,985	493,385	466,998	556,740	604,879	705,651	827,681	889,556	886,561
Colorado	2,224,610	2,907,856	3,304,042	4,338,801	5,050,332	5,609,445	6,733,658	7,518,811	8,105,925
Den as % of CO	23.2%	17.0%	14.1%	12.8%	12.0%	12.6%	12.3%	11.8%	10.9%



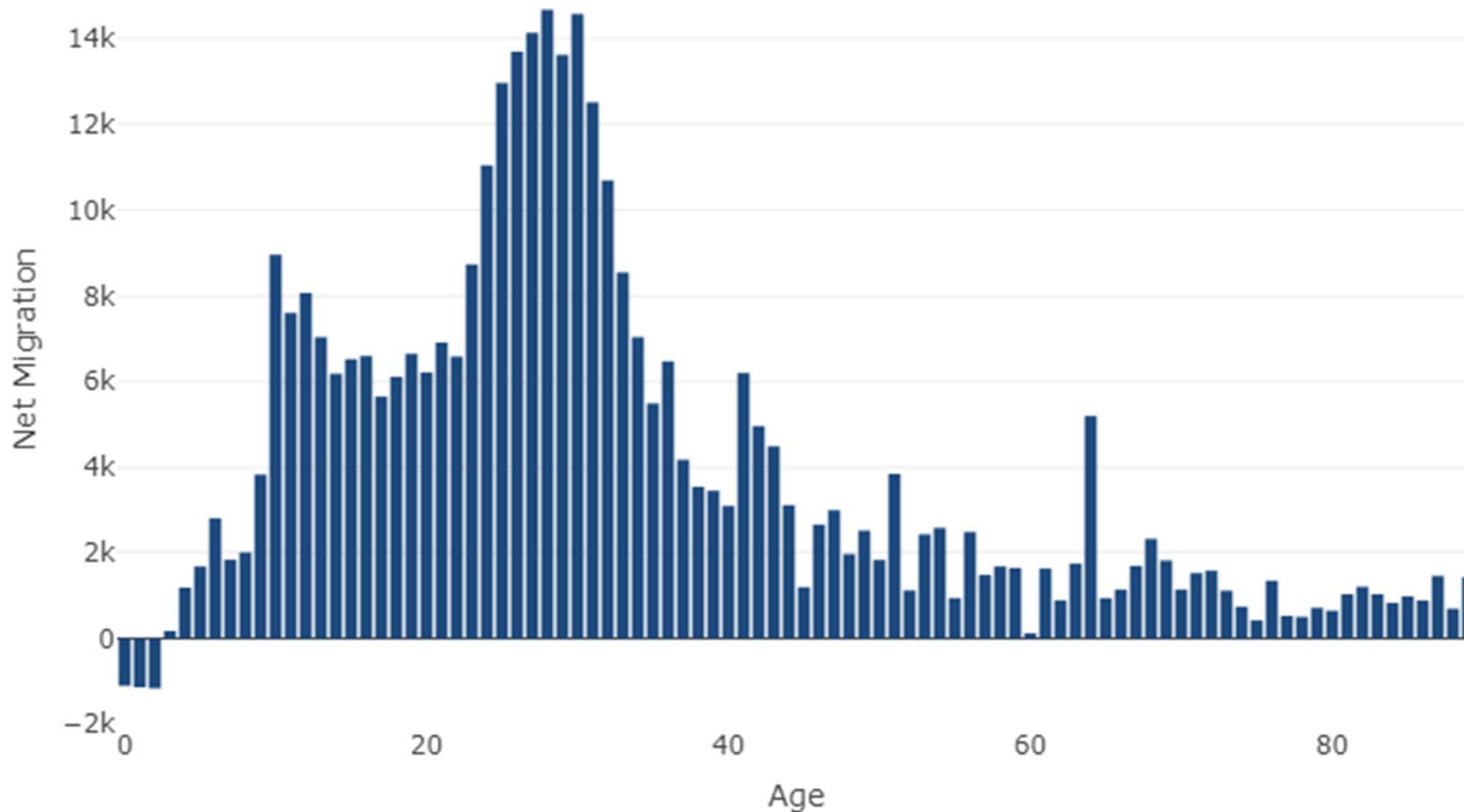
COLORADO
Department of Local Affairs

Denver County Components of Population Change (1970 - 2017)



Colorado

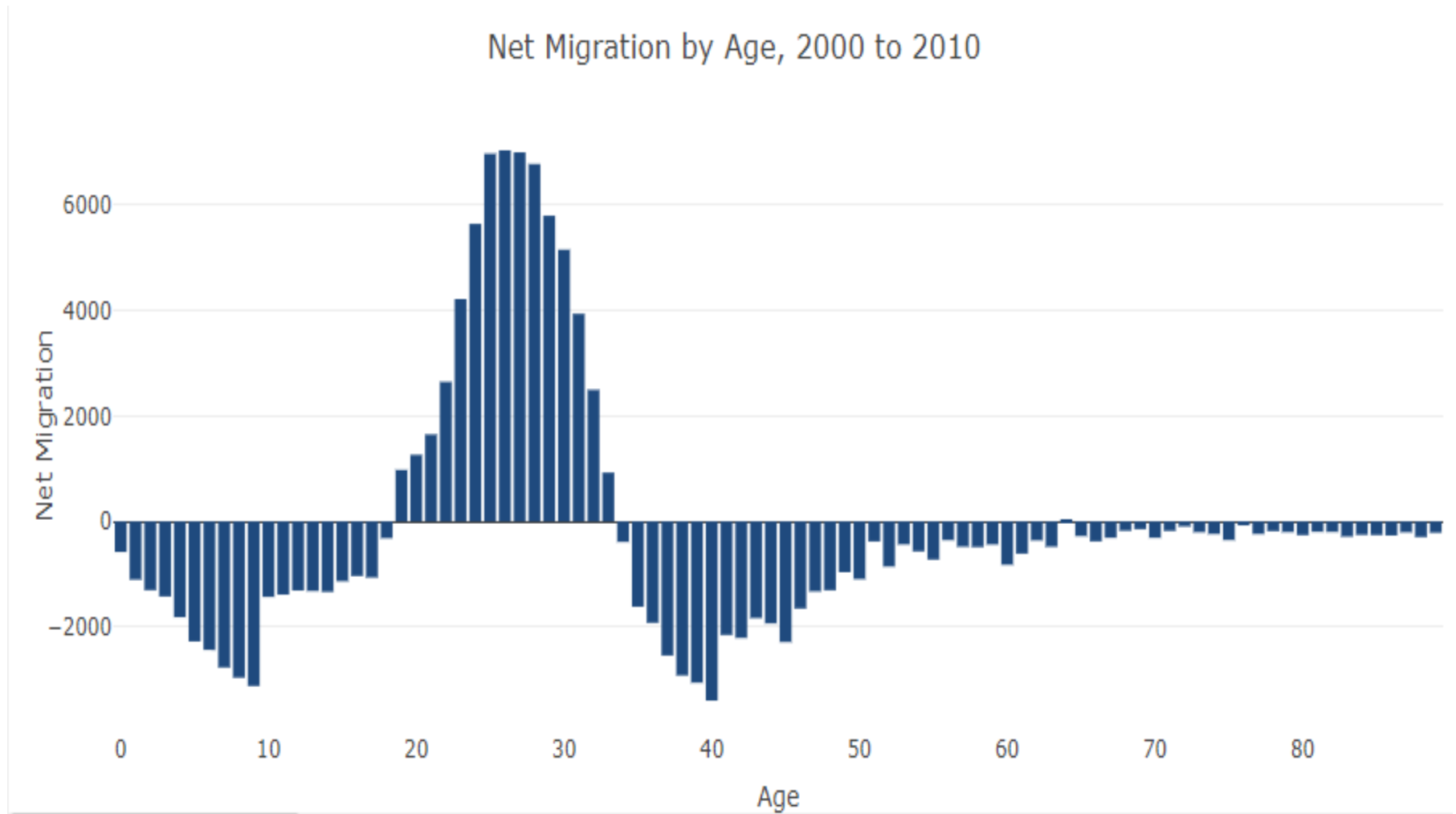
Net Migration by Age, 2000 to 2010



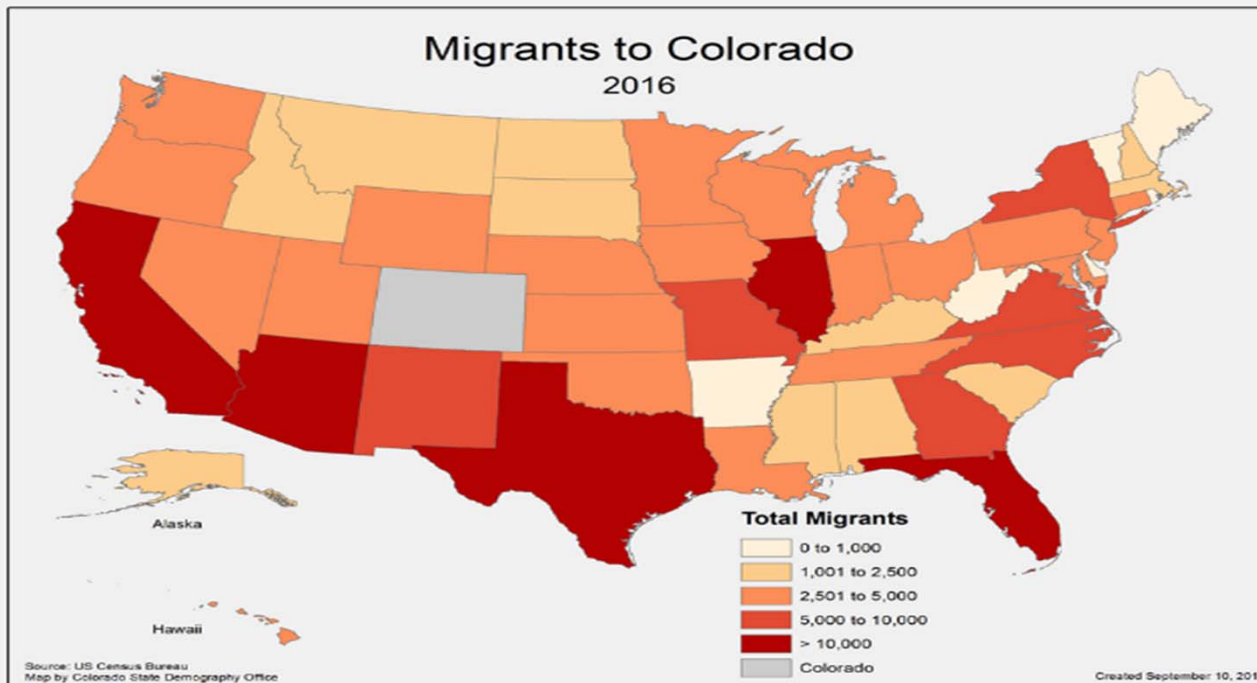
COLORADO
Department of Local Affairs

Denver County

Net Migration by Age, 2000 to 2010



In Migration to Colorado



- In migration ave. 170,000-230,000 /yr.
- Out migration ave. 150,000-190,000 /yr.

They are:

- Younger
- Lower Income
- Higher educational attainment than the U.S. average.

2016 State to State Migration

In	(#)	Out	(#)	Net	(#)
California	(26,900)	California	(22,500)	Illinois	(8,100)
Texas	(20,700)	Texas	(21,600)	New York	(5,100)
Florida	(13,500)	Washington	(13,000)	California	(4,400)
Arizona	(13,000)	Arizona	(11,900)	Virginia	(3,900)
Illinois	(11,400)	Florida	(9,900)	Florida	(3,700)



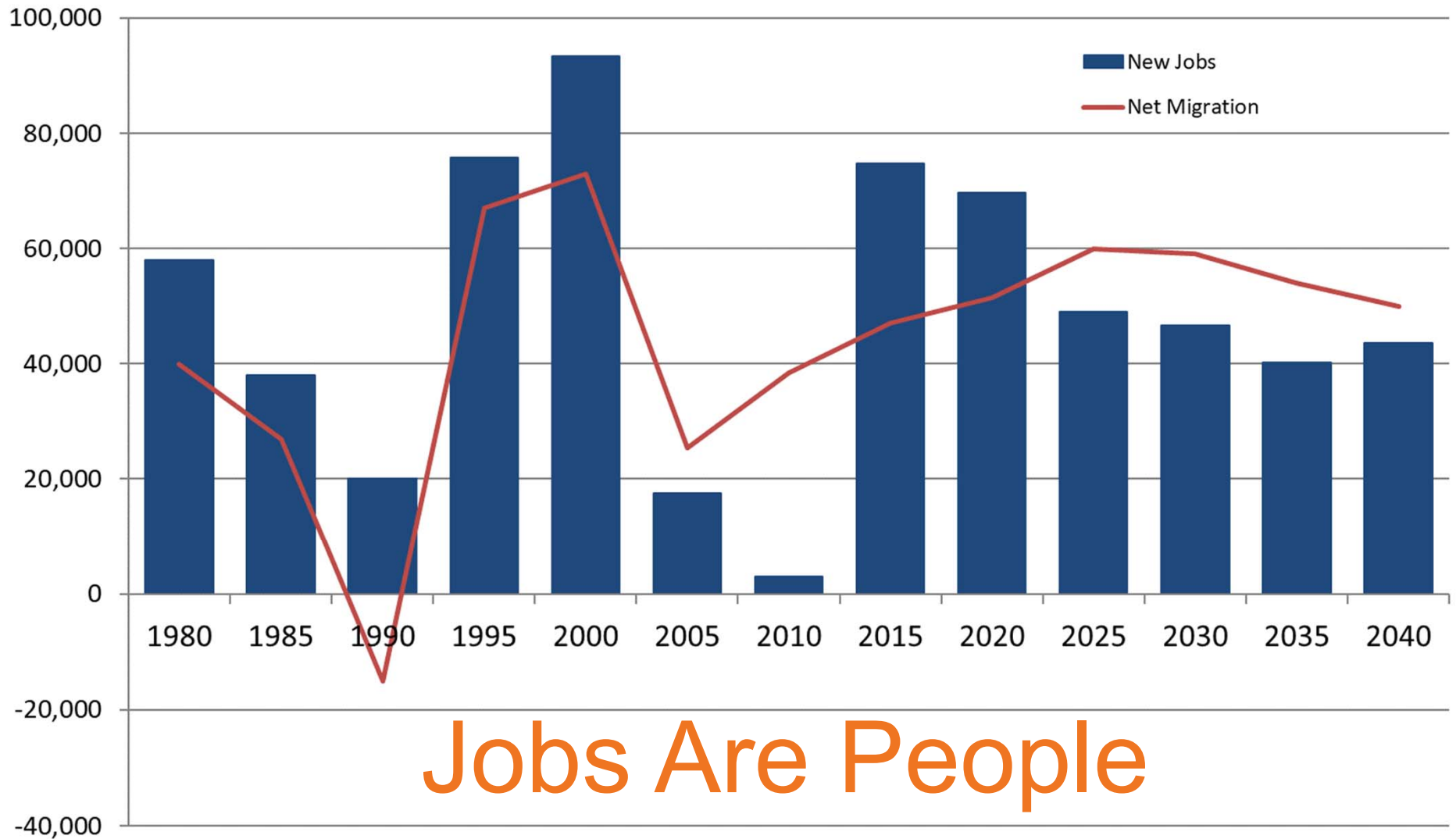
COLORADO
Department of Local Affairs

Denver Migration Flows

Top 10 Net Migration		Top 10 IN-Bound Counties		Top 10 OUT-Bound Counties	
Cook, IL	728	Arapahoe	15,831	Arapahoe	18,728
Boulder	451	Jefferson	8,976	Jefferson	9,874
Los Angeles, CA	344	Adams	5,290	Adams	7,224
District of Columbia	291	Douglas	2,923	Douglas	2,876
Pima, AZ	281	Boulder	2,885	Boulder	2,434
Alameda, CA	281	El Paso	1,563	El Paso	2,092
Dallas, TX	269	Larimer	1,492	Larimer	1,523
Hillsborough, FL	232	Los Angeles, CA	1,204	Weld	1,105
Fremont	231	Weld	1,175	King, WA	876
Adams, PA	212	Cook, IL	1,129	Los Angeles, CA	860



Colorado New Jobs and Net Migration



Jobs Are People



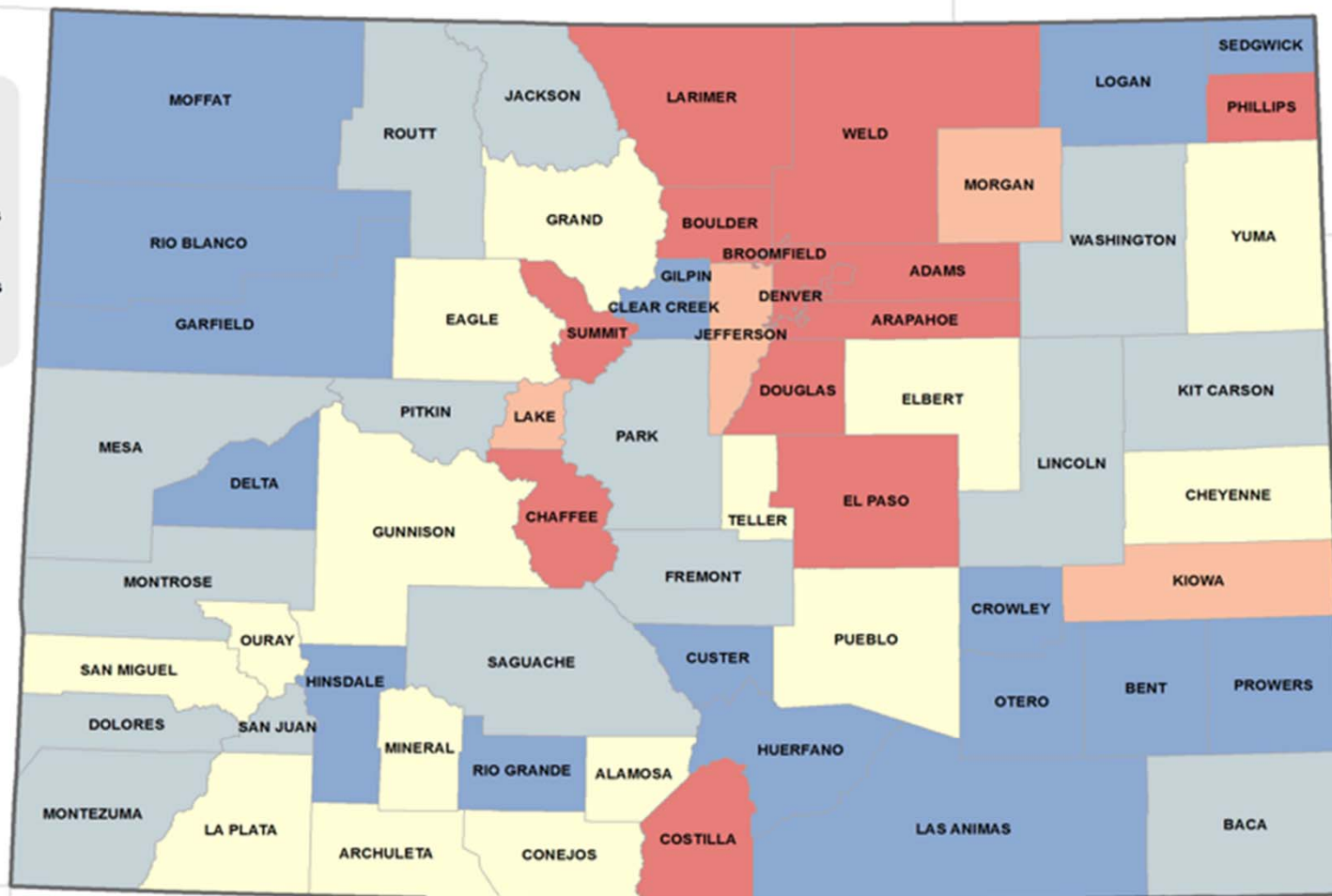
COLORADO
Department of Local Affairs

2017 Jobs Relative to Pre-Recession Peak

Previous Peak: 2005-2009

2017 Jobs vs Pre-Recession Peak

- > 5% Fewer Jobs
- 0% to 5% Fewer Jobs
- 0% to 5% More Jobs
- 5% to 10% More Jobs
- > 10% More Jobs

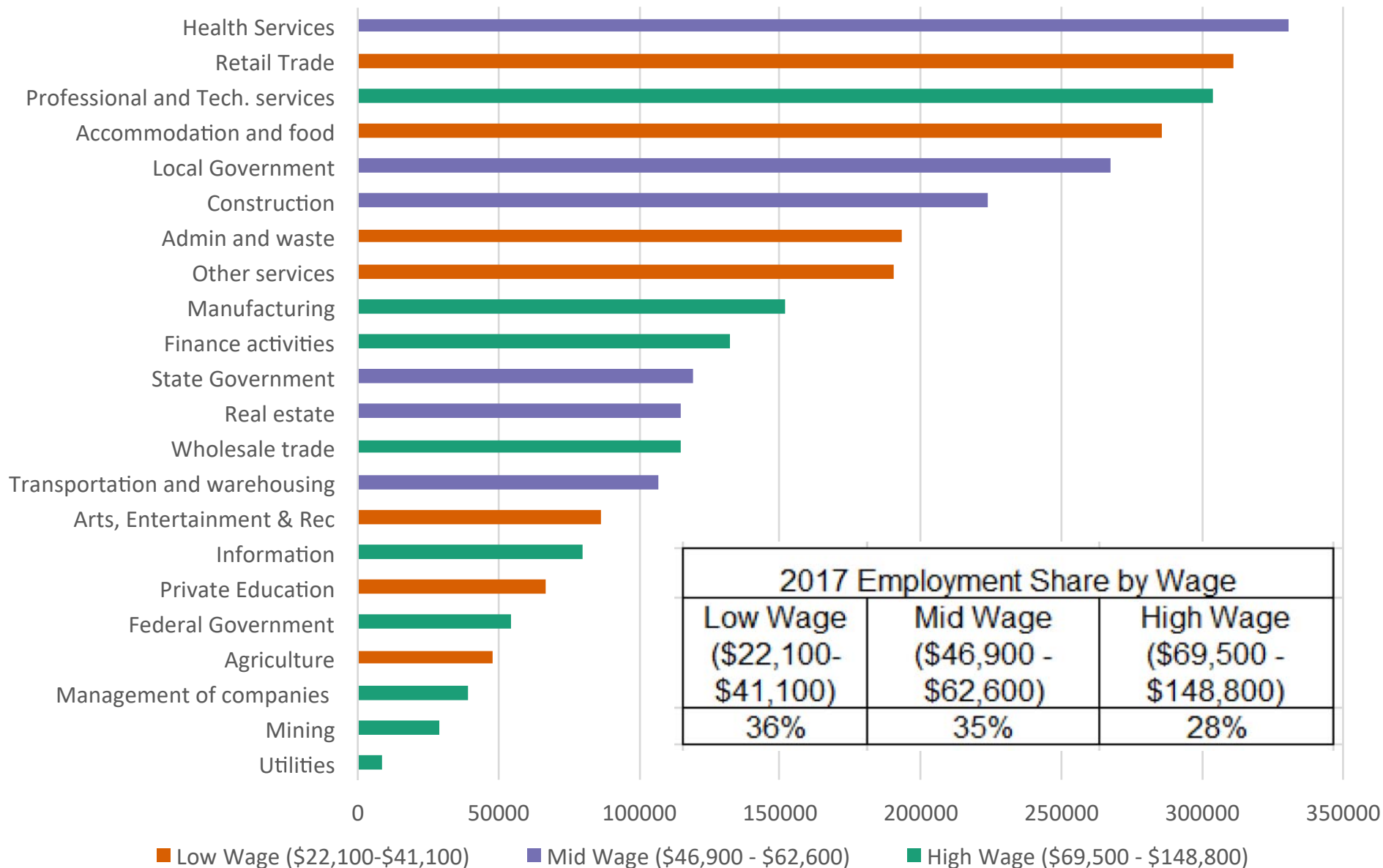


Colorado State Demography Office, 07/24/2018



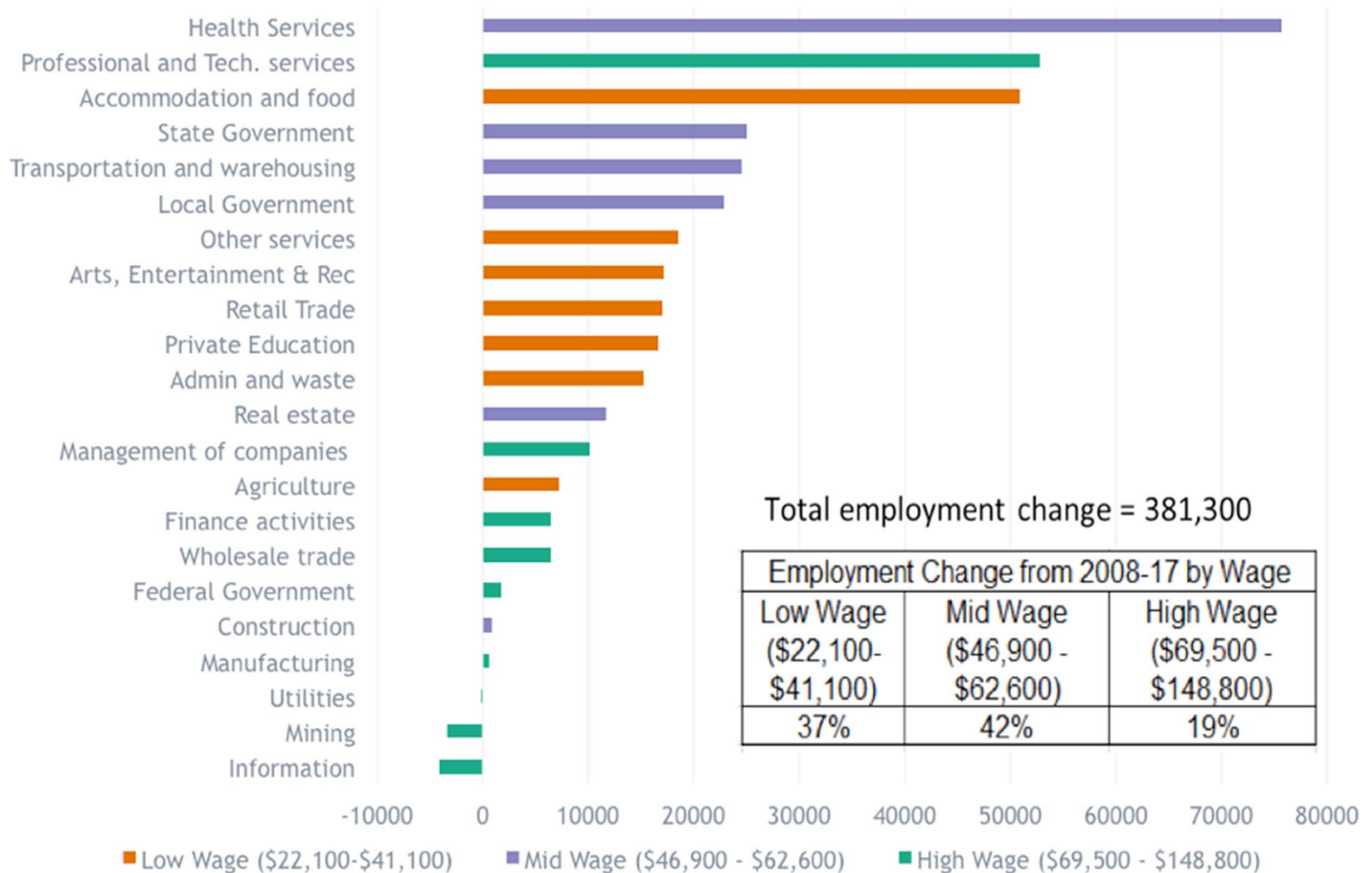
COLORADO
Department of Local Affairs

Colorado 2017 Total Employment by Industry & Wage



Low Wage = Less than 80% Average Annual Wage; Mid Wage between 80% and 120% of Average Annual Wage; High Wage= 120%+

Colorado Employment Change from 2008 to 2017



AGE MATTERS

Why?

Preferences - where people shop
and what they buy.

Housing

Income

Service Demands

Labor Force

Colorado 2019

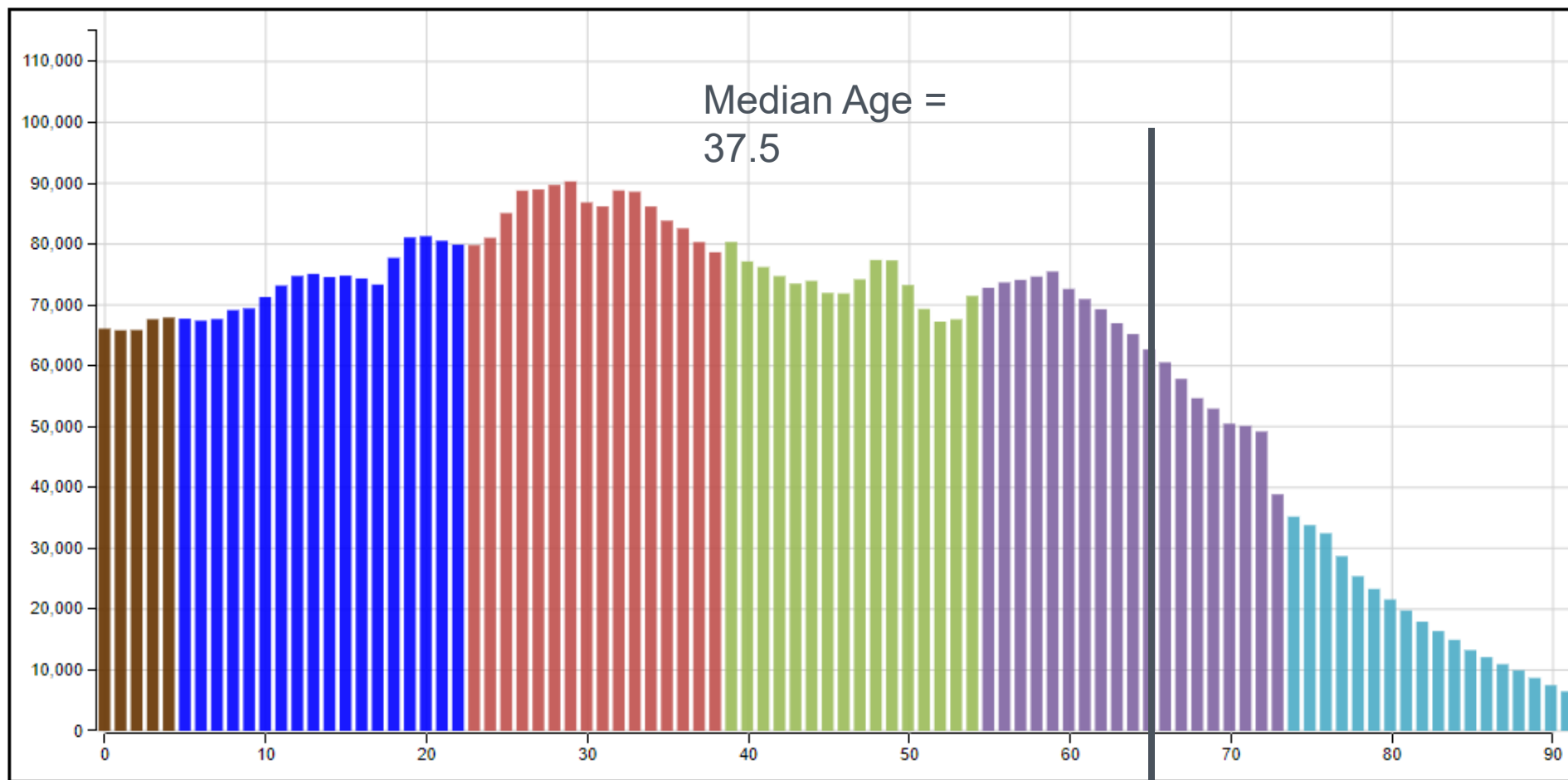
Download Image

Animate

Download Video

Colorado

2019



- Post Millennials (1997 - 2014)
- Millennials (1981 - 1996)
- Generation X (1965 - 1980)
- Baby Boomers (1946 - 1964)
- Silent Generation (1928 - 1945)
- Greatest Generation (- 1927)
- Future Generations (2030 -)
- Next Generation (2015 - 2029)

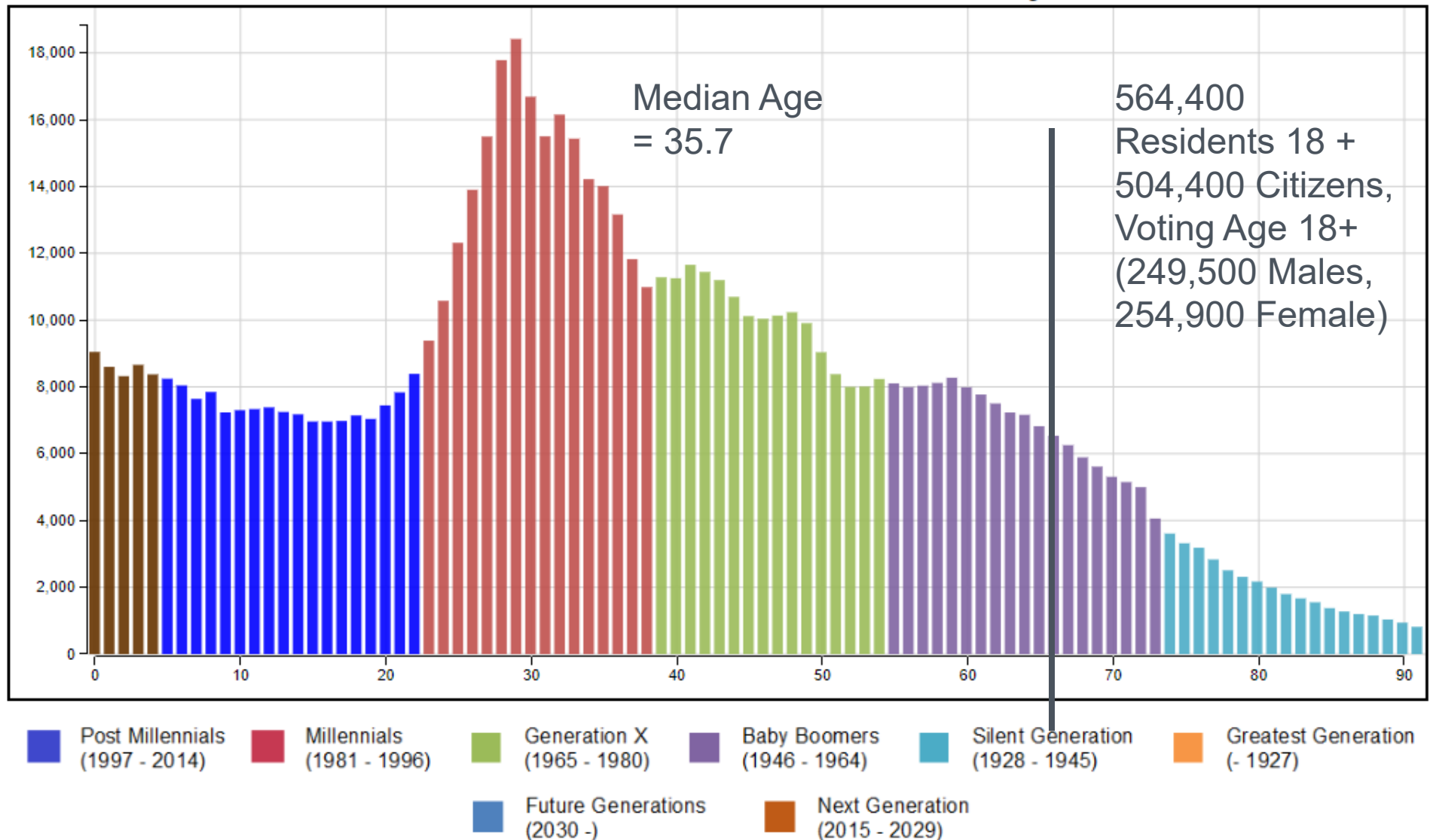


Denver 2019

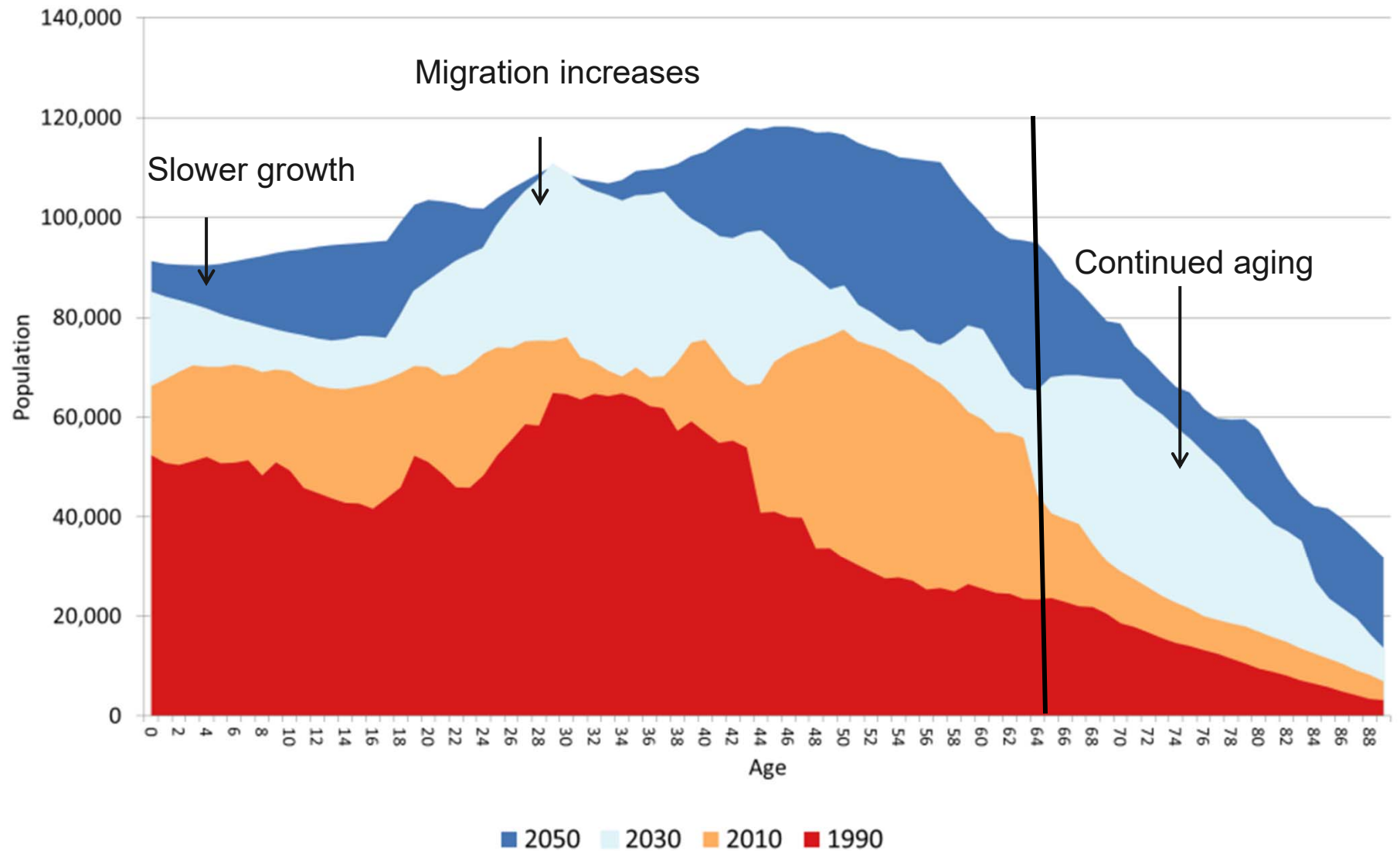
Download Image Animate Download Video

Denver County

2019



Colorado Population by Age 1990-2050

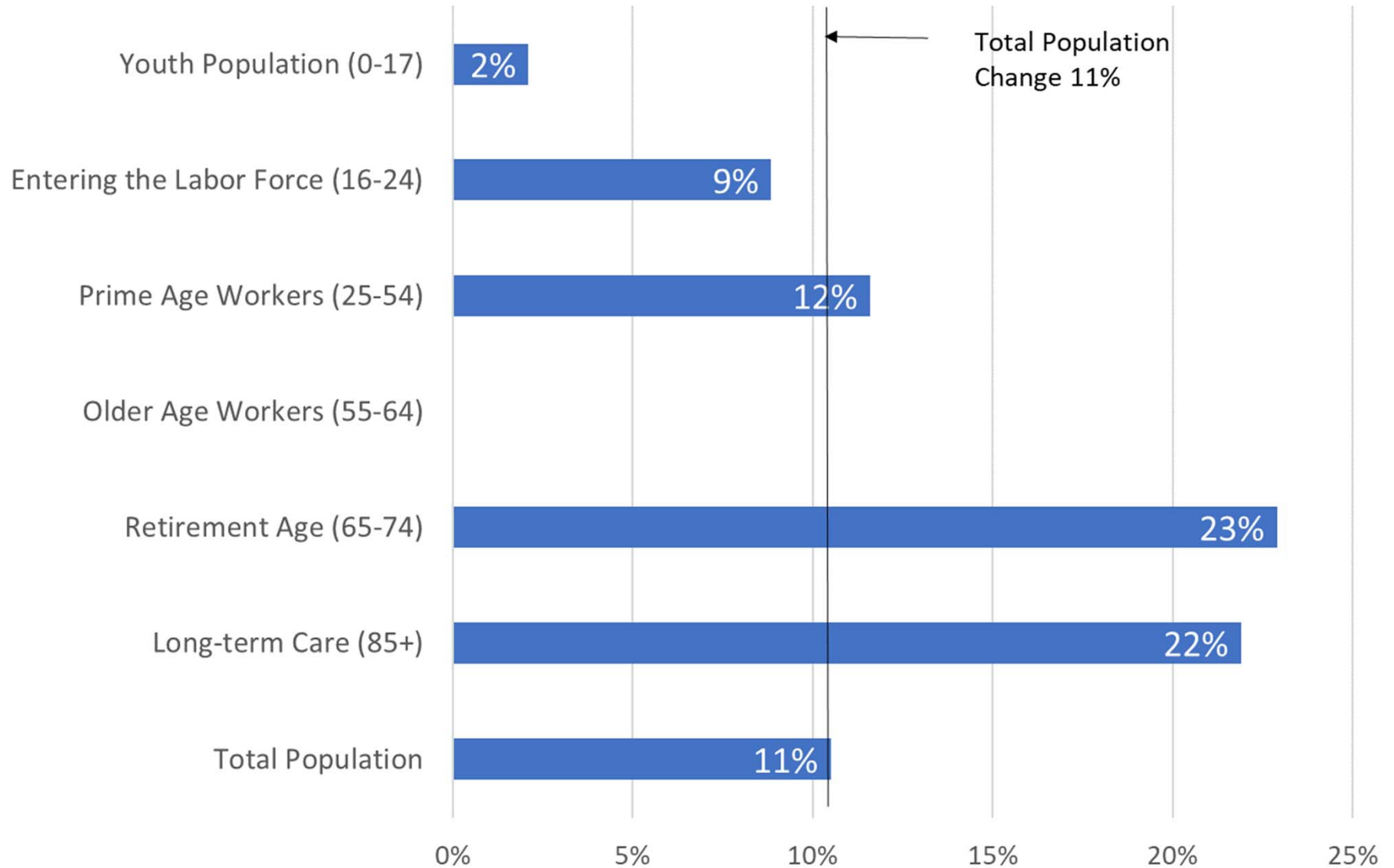


Aging Issues

- Numbers - 2015-30 increase 65+ 72% from 711,000 to 1,200,000
- Economic Driver
- Labor Force
- Housing
- Income - Downward Pressure
- Health
- Disabilities
- Transportation
- Public Finance - Downward Pressure
- Policy and Politics

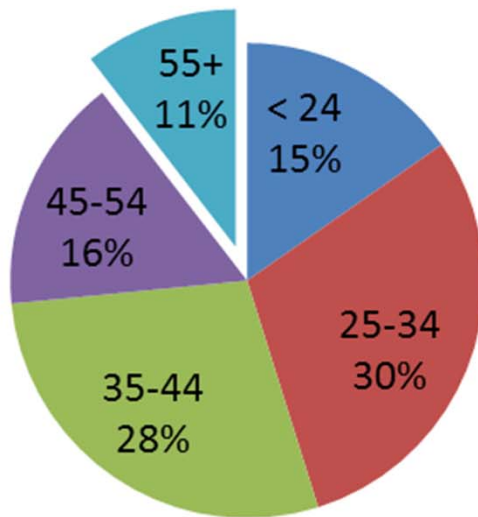


Projected Change in Specific Age Group Populations in Colorado, 2018 to 2025

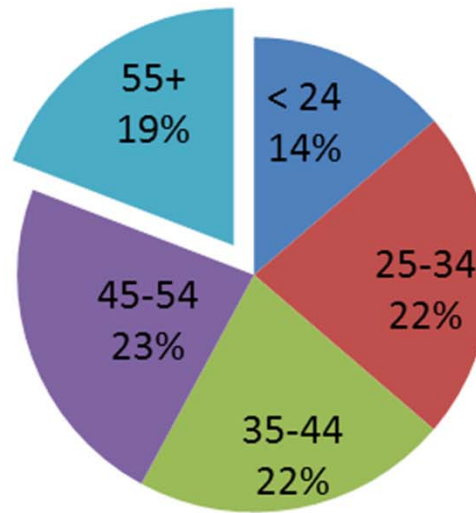


Share of labor force by age group

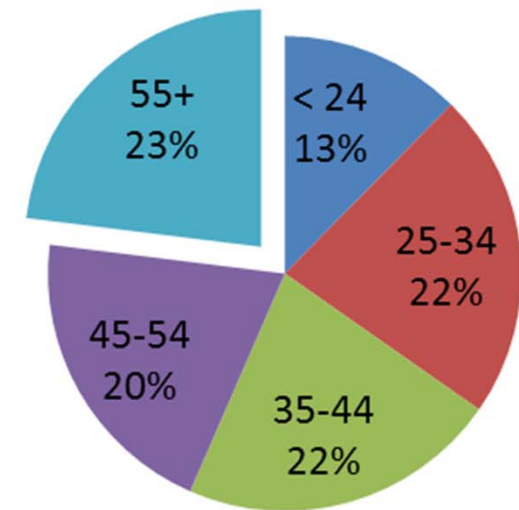
1990



2010



2030

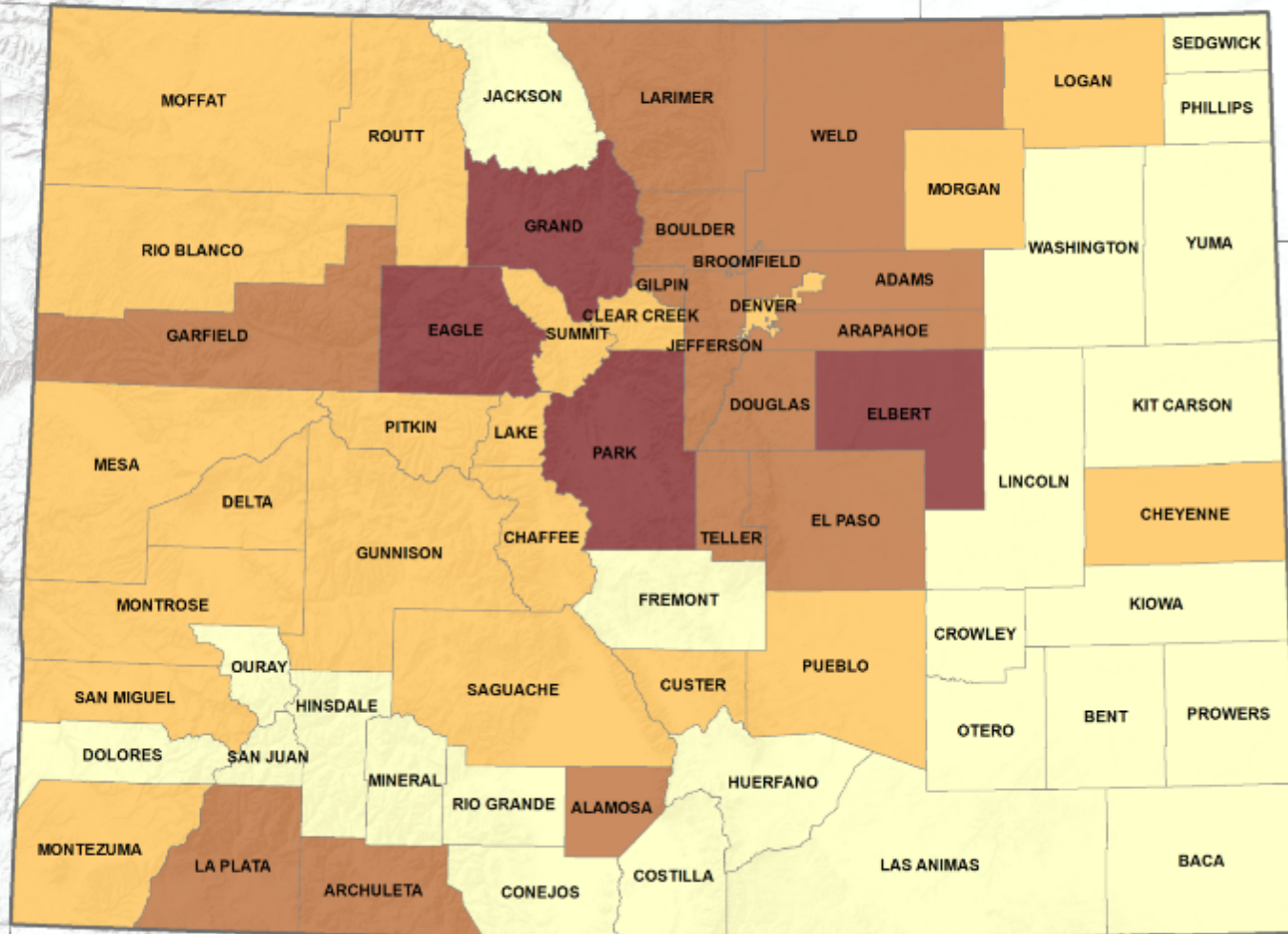
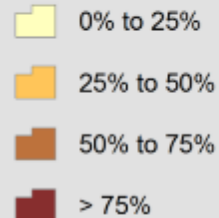


COLORADO
Department of Local Affairs

State Demography Office

Forecast Change in the Population 65+ 2015 - 2025

Percent Change 65+



Sources: Esri, USGS, NOAA

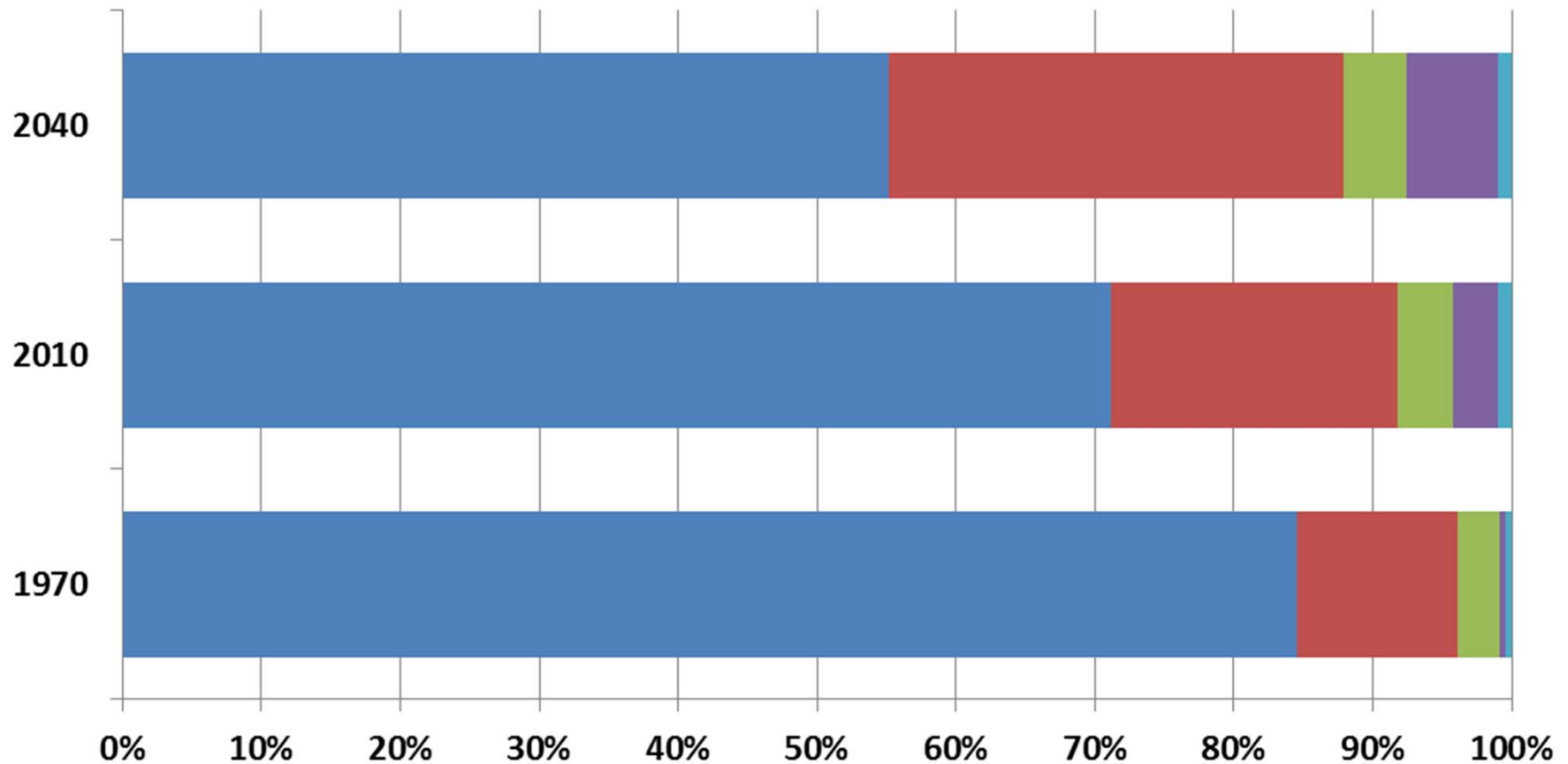


COLORADO
Department of Local Affairs

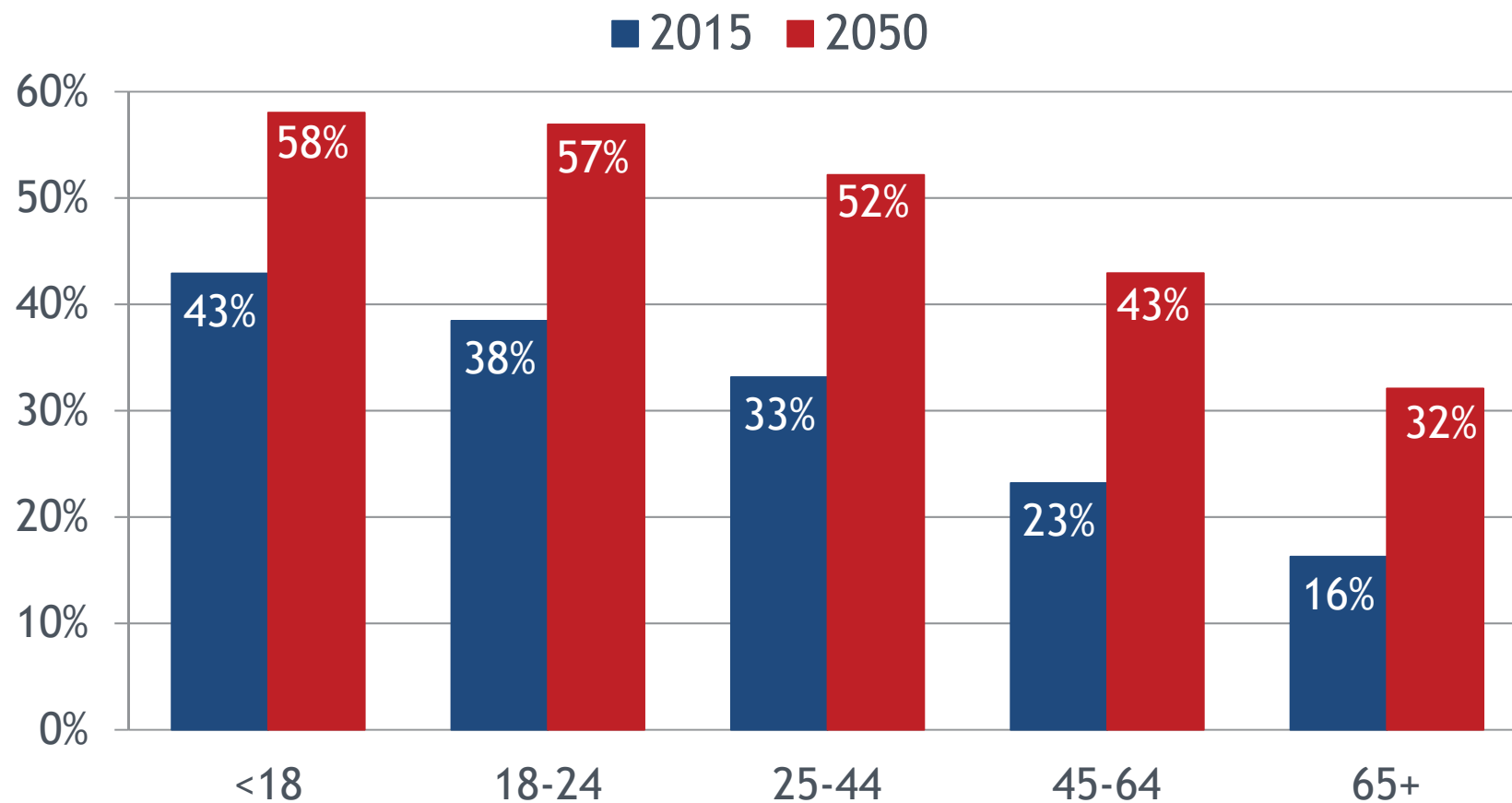
Ethnicity/Race

Colorado Population by Race/Ethnicity

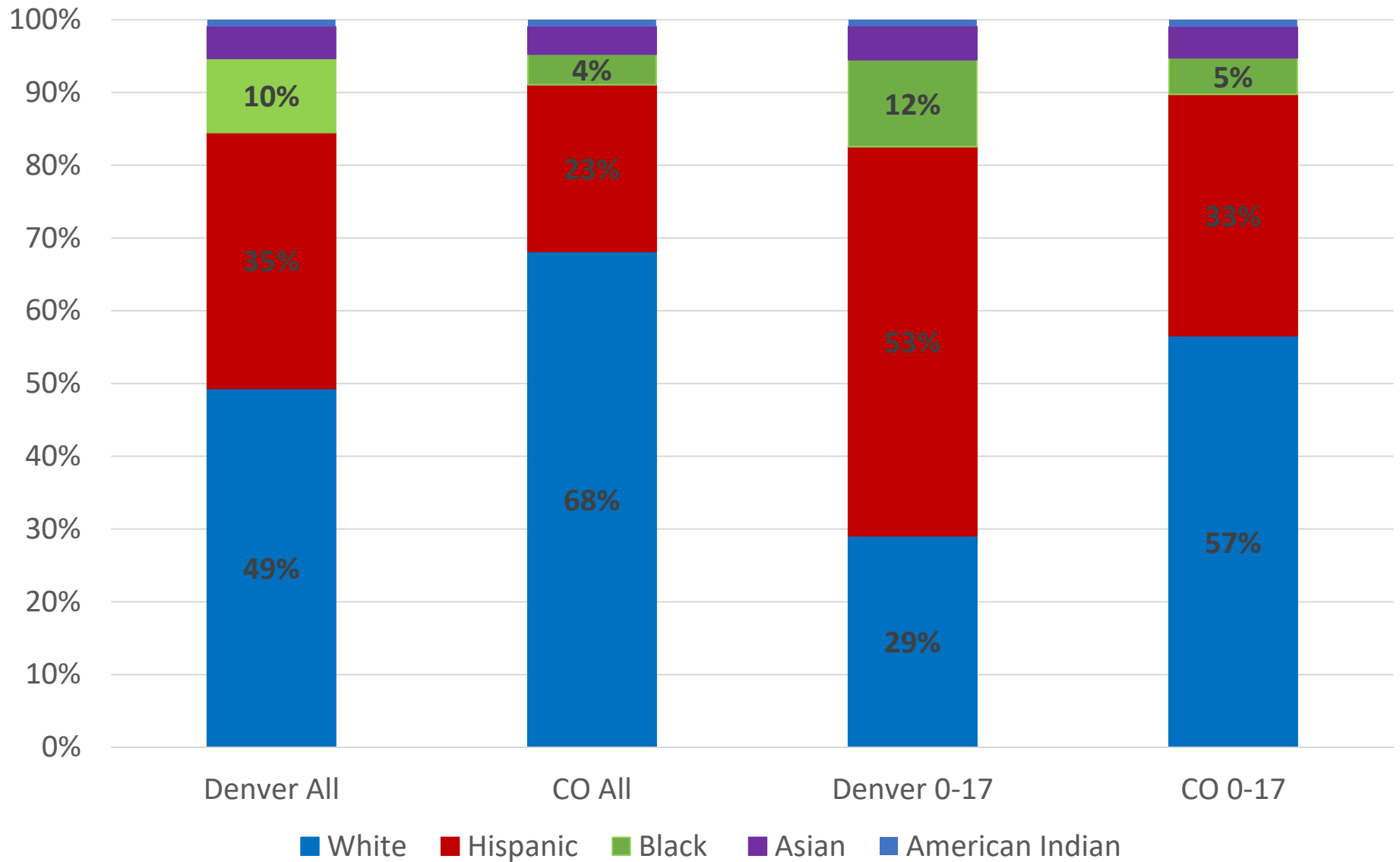
■ White not Hispanic ■ Hispanic ■ Black ■ Asian ■ American Indian



Hispanic, Black, Asian, and other minority share



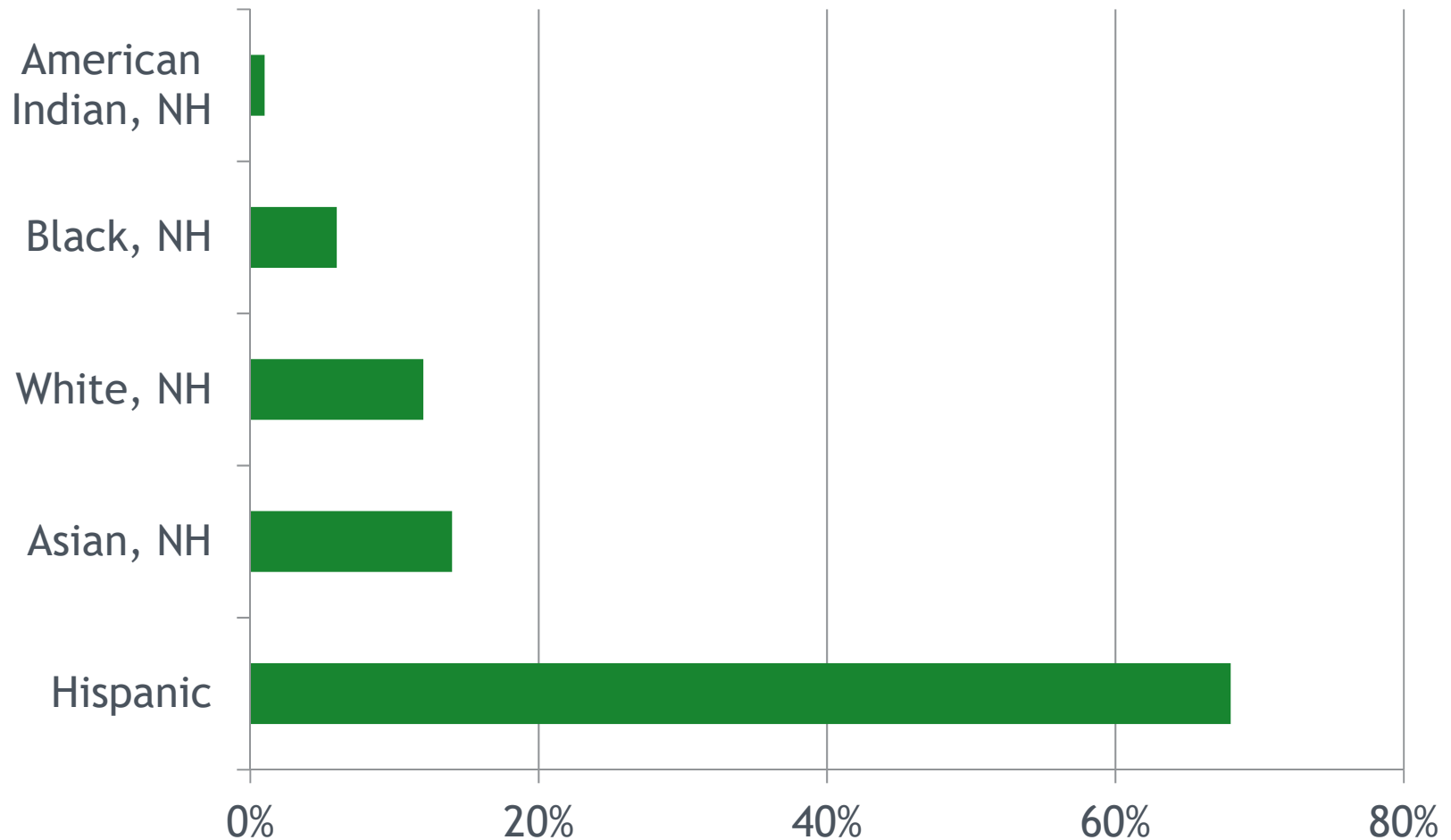
2017 CO vs. Denver Population by Race/Ethnicity



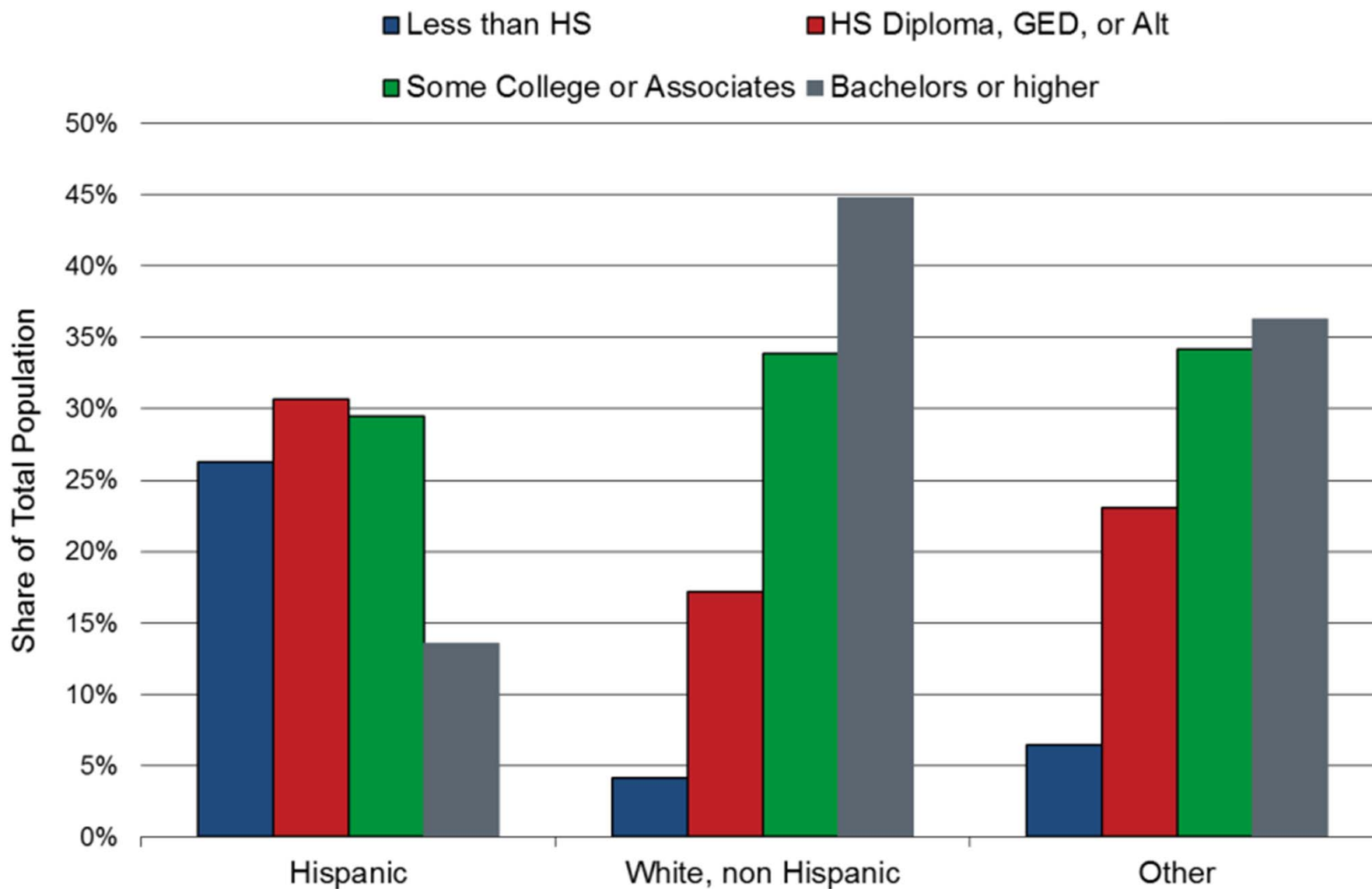
COLORADO
Department of Local Affairs

SDO Race/Ethnicity Estimates

Share of Net Increase in Working Age Population, 2015-2020



Colorado Educational Attainment by Race for 25 to 34 Year Olds, 2014



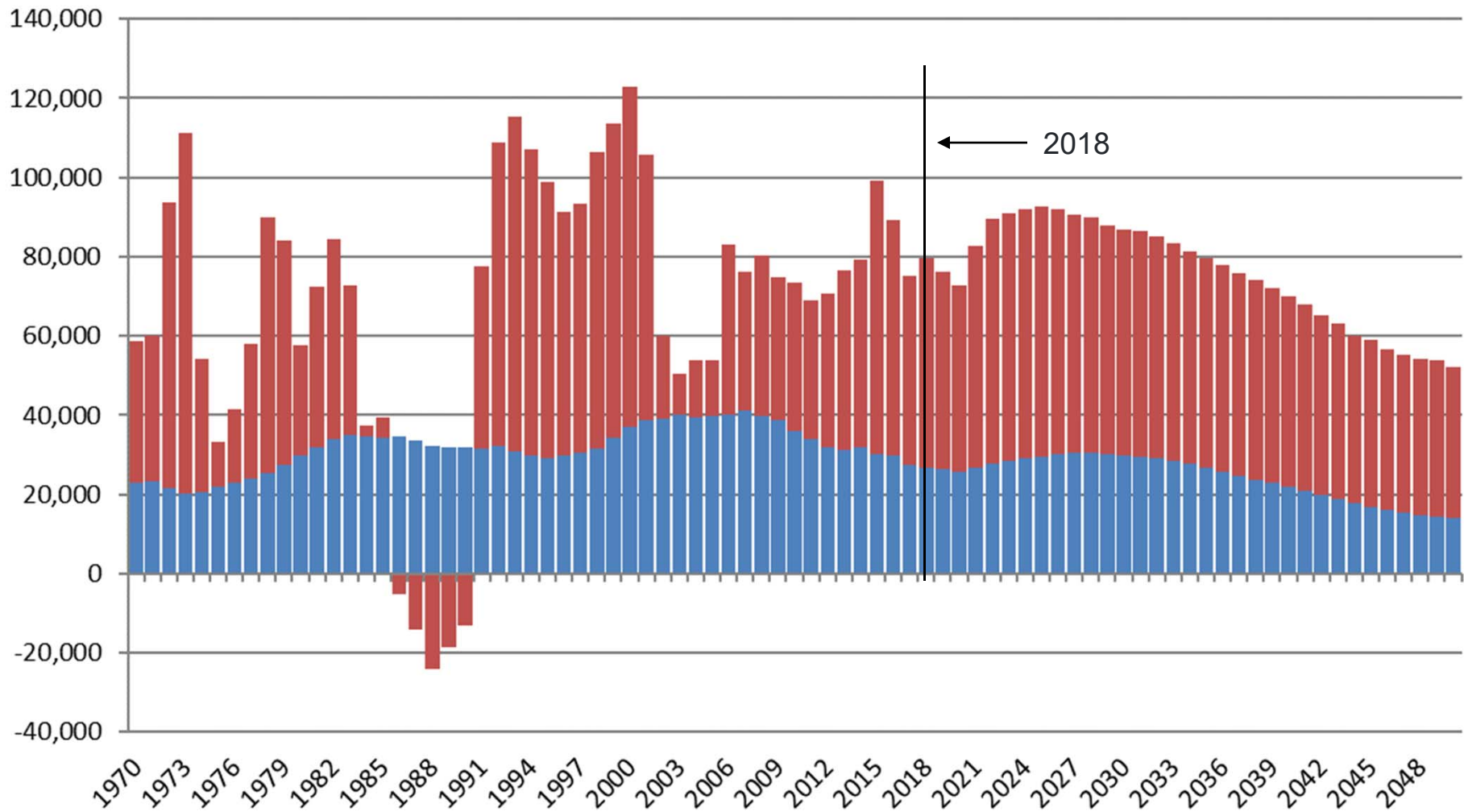
More Growth but Slowing



COLORADO
Department of Local Affairs

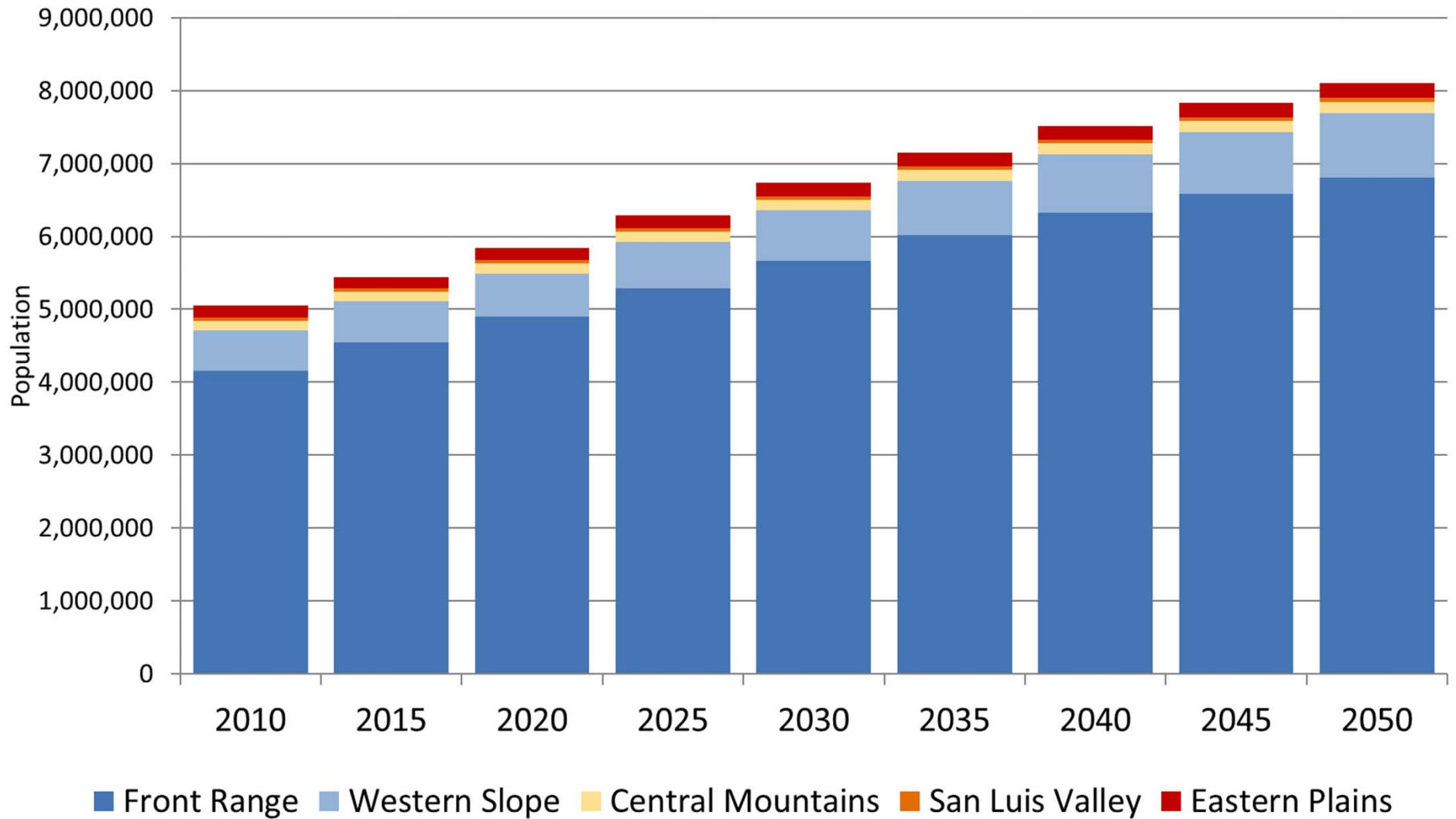
Colorado Population Change 1970-2050

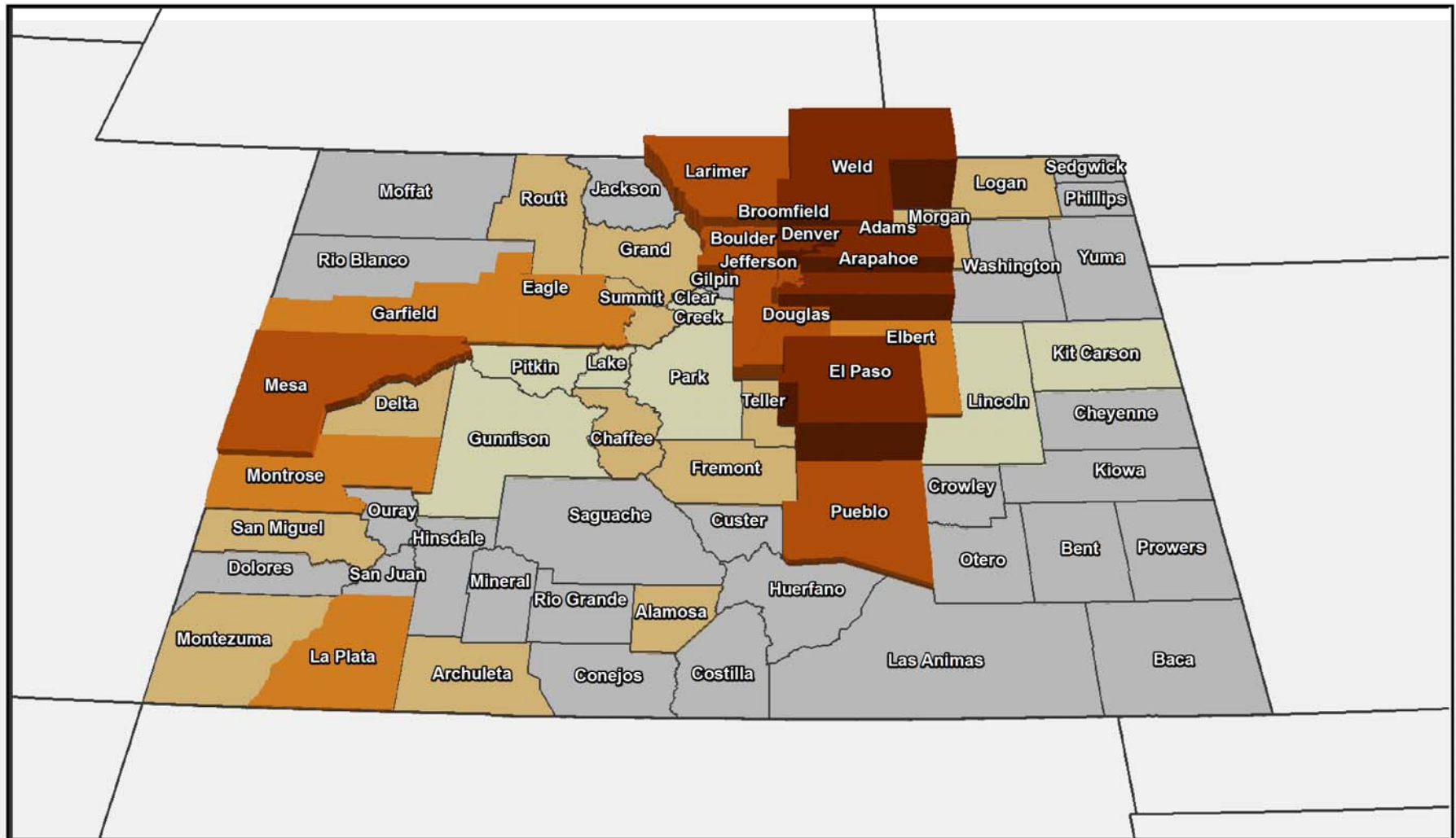
■ Natural Increase (Births - Deaths) ■ Net Migration



COLORADO
Department of Local Affairs

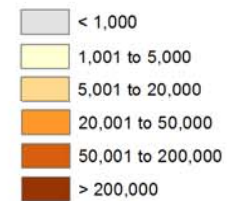
Colorado Population Forecast by Region 2010-2050





Projected Population Change 2018 to 2050

Colorado State Demography Office, 11/2/2018



Risks to the Forecast +/-

- National Growth - National Policies - Intl' immigration
- Water
- Housing - supply, price, type, location
- Infrastructure/Transportation
- State Budget/Policy
- Aging - labor force, prepared labor force
- Industry changes - downturn, bust, recession, competitiveness.
- Natural disasters - nationally



SUMMARY

- Growing and slowing population.
- Disparate growth across the state.
- Slowing birth rates
- Age transitions - workforce and voting block
- Can we continue to attract and retain the best and brightest for the labor force?
- Increasing racial and ethnic diversity.
- Everything is connected - population to jobs to education to housing to daycare to infrastructure to population...
- Importance to Good Data and Census 2020 Counts

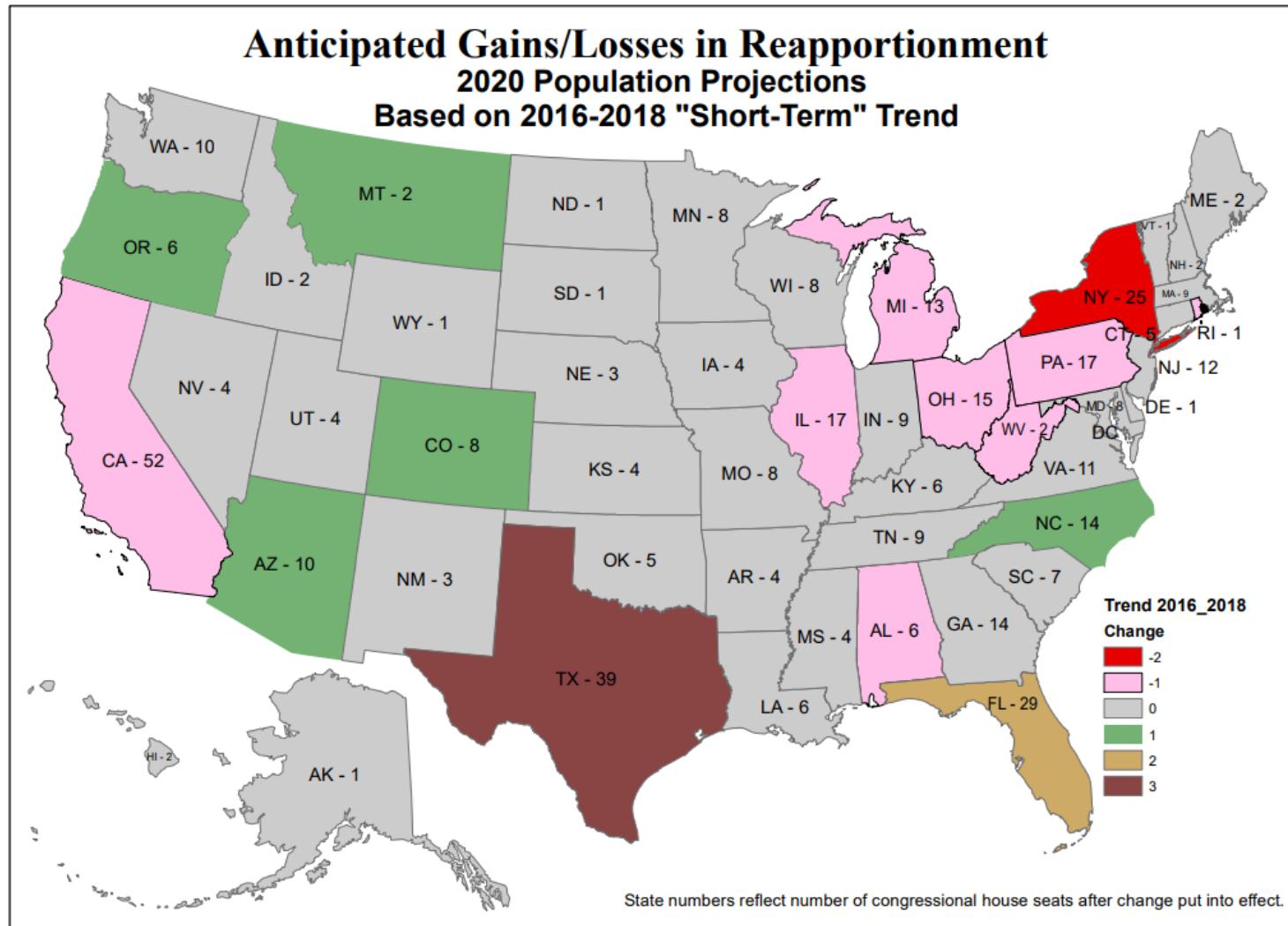


Census 2020 - April 1st

- Important, Safe, Easy! - 11 Questions, 10 minutes
1. Representation,
 2. Funding (\$1,500 per person per year in federal funding), and
 3. Information for decision making.
- Online, phone, paper
 - Response is safe and protected



Reapportionment - Projection



Election Data Services

Based on Census Bureau estimates released 12/19/2018



COLORADO
Department of Local Affairs

Source: Election Data Services Inc. December 19, 2018

Census 2020 Questions

11 questions directed to the householder and to each person living in a household.

- Name
- Phone Number – Just for Census use if necessary.
- Age
- Citizenship – still pending final decision
- Hispanic Origin
- Race
- Relationship to householder
- Sex
- Tenure – own/rent
- Number of persons in household
- Does the person usually stay or live somewhere else?



Citizenship Question?

Is this person a citizen of the United States?

- ☐ Yes, born in the United States
- ☐ Yes, born in Puerto Rico, Guam, the U.S. Virgin Islands, or Northern Marianas
- ☐ Yes, born abroad of U.S. citizen parent or parents
- ☐ Yes, U.S. citizen by naturalization – *Print year of naturalization* ➤

--	--	--	--
- ☐ No, not a U.S. citizen

- Several court cases are challenging the inclusion of this question.
- Colorado is participating in the case in the Southern District of New York.
- The issue will be taken up by the Supreme Court in its April Docket.
- Decision must be made by June 2019 when the census form goes to print.



COLORADO
Department of Local Affairs

2020 Census vs 2010 Census

- More ways to respond.
 - Online, Phone, Mail, In-person interview
 - Online available in 13 languages
 - English, Spanish, Chinese, Vietnamese, Korean, Russian, Arabic, French, Tagalog, Polish, Haitian Creole, Portuguese and Japanese
- Building a more accurate address list
- Increased use of technology
- Enhanced security measures -confidentiality and data security are primary concerns



Preparing for Census 2020

What Has the State Been Doing?

- Goal - Count everyone in the right place.
 - Housing units and Boundaries are the foundation for a successful Census.
 - Updating the Master Address File for all housing.
 - Update the list of all Group Quarter facilities (prisons, nursing homes, college dorms)
 - Updating all boundaries - precincts, census tracts, census block groups, and municipal boundaries.



Now Through April 2020

Education, Marketing and Outreach

- Educate - learn, understand, clarify
 - Material, Tools, Websites, Speakers, Messaging
- Engage - get involved
 - Complete Count Committees
 - Events
 - Messaging
- Encourage -online self response
 - Events
 - Promotion



Census Count Process

- Mid-March 2020 Mailings begin:
 - Census Bureau sends letters to all addresses.
 - Respondents in areas with low internet connectivity receive paper form along with login instructions
- April 1 2020 CENSUS DAY
- Mid-April Reminder postcards sent to non-respondents
- Early May Non-Response Follow-Up begins
- August Data Collection Ends
- December 31, 2020 Delivery of Reapportionment File to President



What Can You Do?

- Learn about Census 2020 by checking out our website.
- Collaborate, connections, leverage
 - Everyone is important in counting Colorado!
 - Access to networks - people, meetings, speaking opportunities.
 - Share questions and concerns from constituents/clients



How Can the State Demography Office Help?

Keep You Informed



demography.dola.colorado.gov/census_2020/

- Resources
 - Fact Sheets - updated regularly
 - Frequently Asked Questions - updated regularly
 - “How To” Guides, Timelines
 - Mapping tools to identify areas with “Difficult to Survey”
 - SDO Outreach Coordinator - Adam Bickford - adam.bickford@state.co.us or 303 864-7753
 - Census Partnership Specialist - Lily Griego - Lily.Romero.Griego@census.gov or 720-635.3596



COLORADO
Department of Local Affairs

SDO Census 2020 Page



[Get Data](#)

Colorado Census 2020

Everyone Counts in Colorado.

Census 2020
[Why Complete the Census?](#)
[Census FAQ](#)
[Census Jobs](#)
[Census News](#)
[Census Complete Count Campaign](#)
[Resources for Communities](#)
[Census Data Tools](#)

Welcome to the Colorado Census 2020 Homepage

Census Day is April 1, 2020.

This website provides information about the Census along with resources communities and constituent groups can use to achieve a complete count of people in Colorado.

The contents of this page will develop as we get closer to Census Day, April 1, 2020.

This site is maintained by the State Demography Office. Be sure to visit this site often.

Why Complete the Census? Completing the Census provides multiple benefits for the State of Colorado and your community. It also gives you the chance to show the world that you are here. Reasons to complete the Census	Census FAQ Frequently Asked Questions about the Census. Answers to your questions about the Census, its contents, and how you complete it. Questions are updated periodically. Read the Frequently Asked Questions	Census Jobs A listing of Census jobs offered by the U.S. Census Bureau. Census Jobs Census News A collection of some news stories concerning the 2020 Census. Census News
State Complete Count Campaign	Resources for Communities	Census Data Tools <ul style="list-style-type: none">The Census Response

Resource for Colorado-specific Census information

All Colorado Census information can be found here

Developed and maintained by the State Demography Office



COLORADO
Department of Local Affairs

https://demography.dola.colorado.gov/census_2020/

Thank you

State Demography Office
Department of Local Affairs

Elizabeth Garner

Elizabeth.garner@state.co.us

303-864-7750

Demography.dola.colorado.gov



COLORADO
Department of Local Affairs